

# SUSTAINABLE

# ABLE

## #12





# INTRODUCTION

## Welcome to the 2024 Sustainable Newsletter.

At the start of 2024 we launched our Social Value Strategic Framework. This Framework further developed our approach and goals and in this edition we look at some of the initiatives our supply chain have been involved with.

Our DL/28 Lounge in Old Street recently turned one and so it seems a good opportunity to remind you what our two DL/ Member Lounges and DL/ Membership can offer you.

Following on from our Energy Efficiency Guide and Water Guide for occupiers we want to follow up in this edition with a set of handy end of day procedures that will help reduce energy consumption.

Lastly, we take a look at recycling; what's been happening as well as the changes that are coming our way in the spring. All businesses will need to be compliant with this legislation and we are here to support you as best we can.

### In this issue...

- Social Value - collaborating closely with our supply chain
- DL/ Members - the perks of being a member
- End your work day right - log off and switch off for energy savings
- Recycling for businesses is changing - what you need to know



DL/28 Members Lounge, 28 Featherstone Street EC1



# SOCIAL VALUE STRATEGIC FRAMEWORK - COMMON GROUND

The partnerships we have with our supply chain are incredibly important, and together we aim to maximise the social value that our businesses create individually, and together.

CIS Security's Citizen Trust Framework is a case in point; it supports charitable activities within the communities that their business operates, and we are delighted that they offered to make donations to two charities we have supported through our own Community Fund - City YMCA London & North and Providence Row. Their donation to Providence Row was allocated via their CEO Sleepout donation channel with CIS representatives braving the elements late November to take part in this national sleepout that raises funds for the homeless.

In September, a Derwent London team took part in an abseil fundraiser for the London's Air Ambulance and we learnt that CIS Security were also a long-term supporter of them. Therefore, we were pleased to join forces as one abseil team to raise funds for this incredible charity.

Last month the youth employment team at Islington Council asked for our help in reaching out to our network of suppliers who identify as Somali/British Somali and who might be willing to get involved to share their experiences and employment journeys. The event was for Somali young people aged 18-25 with the aim to connect them to Somali professionals from various sectors and allow them to explore career options, meet inspiring role models, foster connections, and gain motivation for their career paths. Our Front of House service partner Proception rose to the occasion

with one of their team attending and reporting back to say...

“

**The event was a truly eye-opening experience, offering valuable insights into diverse career paths and the personal journeys of professionals across various industries. Many speakers shared their stories of unexpected career changes and how they leveraged transferable skills to excel in fields unrelated to their original studies. The event also highlighted the importance of exploring less conventional opportunities, encouraging attendees to broaden their thinking and consider pathways they might not have previously known about.**

”

Proception have also kickstarted the festive season by advising us that they want to take part in Christmas Jumper Day, and now all our service partners on sites across the portfolio are joining in the fun on 12th December by wearing Christmas jumpers in aid of Save the Children.

We have always taken pride in our engagement with local communities and enjoyed building strong relationships with our stakeholders, and we are just as proud that we have a supply chain that feels the same.



Derwent London & CIS Security team members abseiling in aid of the London's Air Ambulance



# DL/ MEMBERS UPDATE

As a valued tenant of Derwent London, you will automatically enjoy complimentary DL/ Membership status. DL/ Members have access to an ever-growing package of exclusive benefits. You can use our Lounges, DL/78 in Fitzrovia and DL/28 in Old Street for touch-down workspace, bookable meeting rooms, private hire event space and somewhere to connect and collaborate. You'll receive specially negotiated discounts from a diverse collection of businesses, including local coffee shops, restaurants and wellness brands.

Members also have access to a packed calendar of experience-led events curated by our dedicated team. And the DL/ App is your effortless personal portal to all of it. Why? Because amenity and service are important to us. We see our role going beyond the responsibilities of a traditional landlord.

We believe in strong relationships, and we want to create a positive sense of community among all of us in the Derwent London family. DL/ Membership is us inviting you to be part of it.

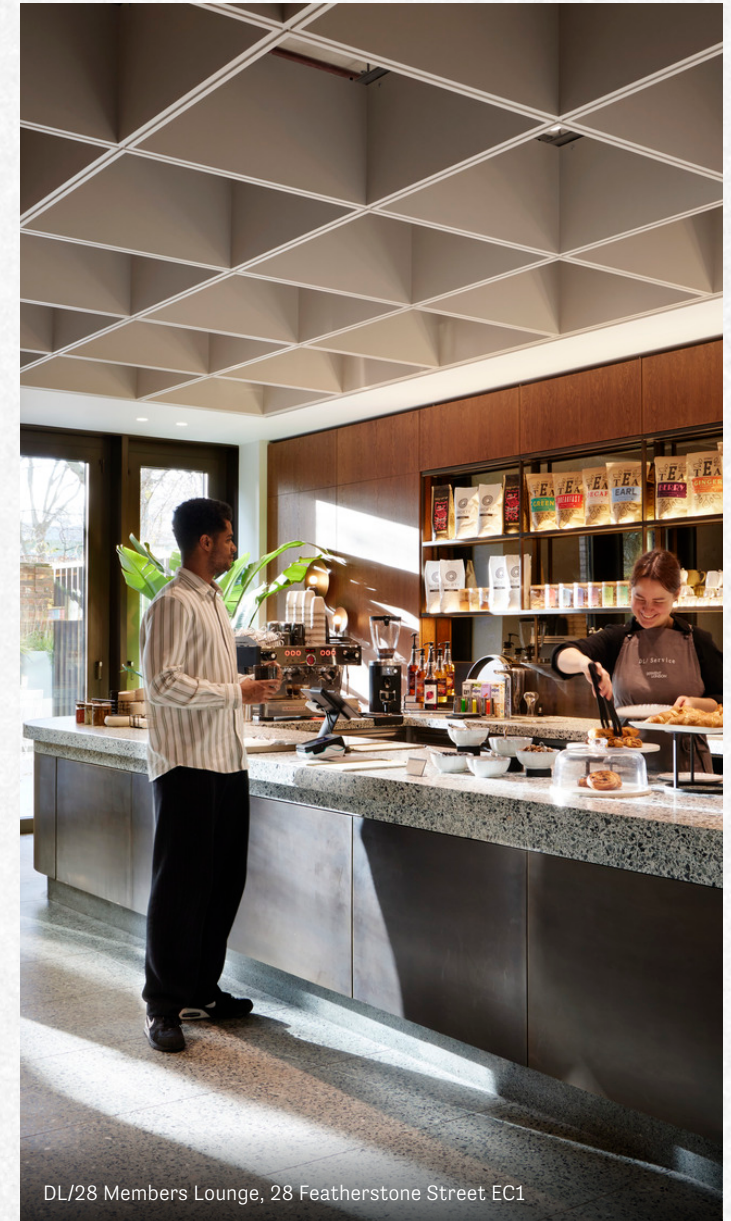


## Our DL/ Lounges include:

- Communal collaboration and working areas in the Lounges
- Bookable meeting rooms configured to your needs
- Library for quiet working (DL/28)
- Outdoor terrace (DL/28)
- Event / town hall space available for exclusive hire
- On-site café operated by DL/ Service
- Curated events programme
- All connected via the DL/ App



DL/78 Members Lounge, 78 Charlotte Street W1



DL/28 Members Lounge, 28 Featherstone Street EC1



# GIVE AN HOUR FOR EARTH

Back in March a number of our buildings across the portfolio took part in this annual event which reminds us that we have the power to make a positive impact on our planet and reduce our out of hours energy consumption.

Whilst Earth Hour refocuses our attention on this issue, it's important to keep up the good work all year round. Your Building Management teams ensure that lights are switched off or dimmed in landlord areas and we would encourage you to review your own lighting systems as well as small power equipment to ensure that when everyone leaves the building no lights have been left on.

Here are some tips for a great end of day shut down process, plus links again to our energy efficiency and water guides.

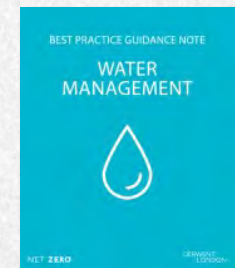


## End of the day, Out of Hours and Bank Holiday - things to consider:

- ☒ Does your tenant plant (heating, cooling or ventilation) match the occupancy pattern of your office?
- ☒ Can on-floor heating or cooling controls be switched off, or plant run times shortened?
- ☒ Can temperatures be increased by 1°C in summer or reduced by 1°C in winter?
- ☒ Turn off lights and desk lamps, computers\*, monitors or laptops
- ☒ Switch off any digital signage, TVs in meeting rooms & other advertising displays (switch off, make sure they're not just on stand-by)
- ☒ Unplug chargers (e.g. mobile phone)
- ☒ Switch off standalone photocopiers, scanners and printers\*
- ☒ Check meeting rooms for lights, computers, coffee machines, etc\*
- ☒ Switch off any electric heaters\*
- ☒ Can kitchen water boiler or Zip Taps be turned off\*

As always if you want to speak to us about all things sustainability you can set up a meeting with our Sustainability Manager, Zanda Pipira.

[Book time with Zanda Pipira: Sustainability meeting](#)



\* Please check with your maintenance and IT team first before turning anything off or speak with your Office or Building Manager.








# RECYCLING

## What's been happening across our buildings?

Over the past two years we have been working with our waste contractor, Recorra, to develop Recycling Roadmaps and this year has been no different – we developed seven new Roadmaps across our portfolio and issued these to selected buildings to fast-track recycling improvements not only in landlord managed areas but also in our occupier office spaces.

### Here are some of this year's stats in numbers!

-  **Total of 16 office recycling audits carried out and 66 improvement recommendations issued to occupiers**
-  **9 bin store audits carried out with 47 recommendations for improvements**
-  **3 cleaning team training sessions completed**
-  **2 Lunch & Learns provided**
-  **10 buildings achieving 75% recycling rate**

## What else can we do?

A range of support is available for you to enhance recycling awareness / to increase recycling awareness among your colleagues. From recycling audits, occupier Lunch & Learns through to awareness stands, workshops and training – there are many great activities to choose from!

If you are interested to take part in volunteering, please sign up to any of the below activities and we will be in touch with available dates for end of Q1, 2025.

Would you like to sign up to a River Thames beach clean?

**Beach Clean**

Would you like to help Plan Zheroes collect food for local community groups?

**Plan Zheroes**



Plan Zheroes volunteers



# RECYCLING

## Recycling – change is coming!

Simpler Recycling is a UK-wide legal framework developed to make the recycling process more straightforward. All businesses will have to remain compliant with this legislation. Here is what you need to know:



Cartons/Tetrapack recycling – now accepted in our recycling bins



Paper, Cans & Plastic Containers now rebranded to simple 'Mixed Recycling' to ensure adherence to Simpler Recycling and designed to make it easier for you to recycle properly and avoid contamination



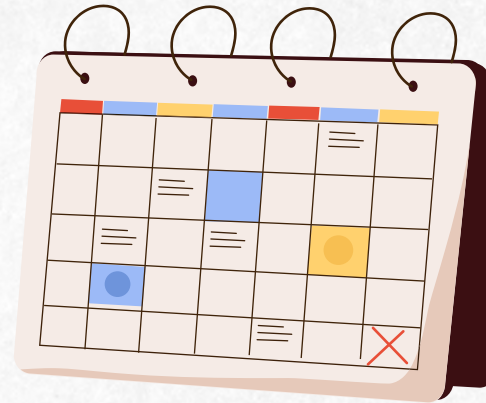
Food recycling becomes mandatory from 2025 – key legislation!

To refresh your office space with new posters which also includes new Mixed Recycling poster with Cartons/Tetrapack, please head to the [Poster Library](#)

Whilst changes to legislation can be confusing, many of you will already be compliant. For those who aren't, we are here to help you navigate the changes smoothly.

Reach out to us for support by emailing our Sustainability Manager, [Zanda Pipira](#). Alternatively speak with Recorra or your dedicated waste management partner if you procure this independently.

Keep this downloadable guide to hand to '[Get Ready for Simpler Recycling](#)' guide and make sure you stay compliant.



**31st March 2025**

The date when these requirements come into force.



**Food**

All businesses must recycle food waste.



**Glass**

All Recorra customers must have a separate glass collection (if you produce glass).



**Mandatory Recycling**

All businesses must recycle paper, card, rigid plastics, metals (cans), and now cartons. These can all be collected together, although Recorra recommends source separation.



