

# THE FEATHERSTONE BUILDING

Sixty Six City Road, Old Street EC1

Strength with elegance.

A lightness of touch.

Attention to detail.

A warehouse for creative working.

Introduction

04 Overview

The Place

10 Location

22 Your neighbours

24 Transport

26 The Elizabeth line

28 Regeneration

The Space

32 The Featherstone Building

33 Site plan

34 Key features

36 Schedule of areas

38 City Road façade

40 Reception and café

42 Floor plans

52 Roof terraces

56 Cycle storage

57 Core and lifts

58 Responsible development

59 Our journey to net zero carbon

60 A sustainable building

62 Intelligent Building

624 Concrete Core Cooling

66 Materiality

68 Technical Specification

The Team

74 Derwent London

82 DL/ Members

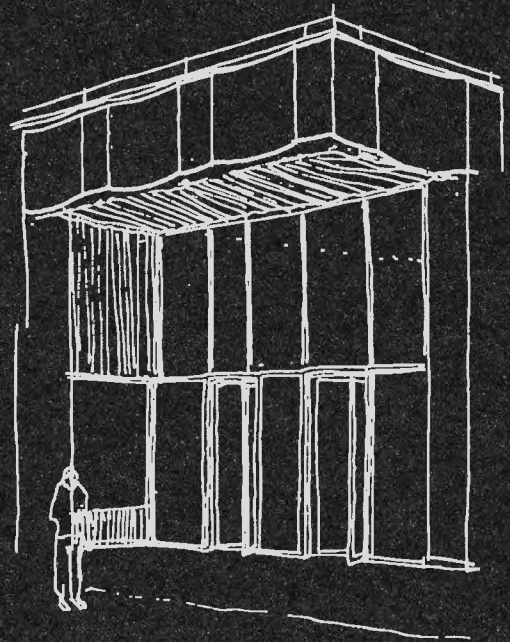
86 Morris+Company

88 Agents

INTRODUCTION

The Featherstone Building is a 126,700 sq ft industrial-inspired workspace with a contemporary finish, located in the heart of the Old Street district, offering 110,000 sq ft of offices, 13,400 sq ft of shared amenity space, DL/28, and 2,350 sq ft of retail.

Completed by Morris+Company in April 2022, it is the latest development from Derwent London for Old Street, following the sister development opposite, White Collar Factory, which opened in 2017.



Aerial view

## Inspired by the past, built for the future

A hub of industry and creativity since the 19th century, history shows that from 1887 the building housed workshops for master craftsmen and welders, bell yards, machine warehouses, a box factory and a cowshed. To ensure the building is a true reflection of its past, architects Morris+Company scrutinised the design and materiality of the eclectic mix of local buildings. The end result is a building whose 'stepped' exterior is staggered in both height and plan, giving the appearance of four adjoining warehouse-like structures. It will both catch the eye and blend seamlessly into its neighbourhood.

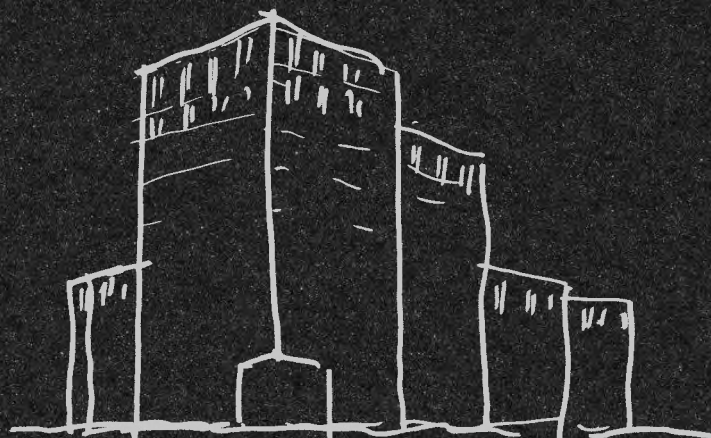


Entrance on City Road



THE PLACE

A stone's throw from Old Street underground station and opposite the iconic White Collar Factory campus, The Featherstone Building stands on the corner of Featherstone Street and City Road: a gateway to the City of London to the south. To the rear it overlooks the Grade I listed park Bunhill Fields, with its calm, reflective atmosphere offering a contrast to the pace of urban life.



View from Bunhill Fields

## A place like no other

Old Street, with its diverse mix of people and businesses, is constantly evolving. As a result there is always something new and exciting to experience in this vibrant corner of London, no matter the time of day.



A



DAY



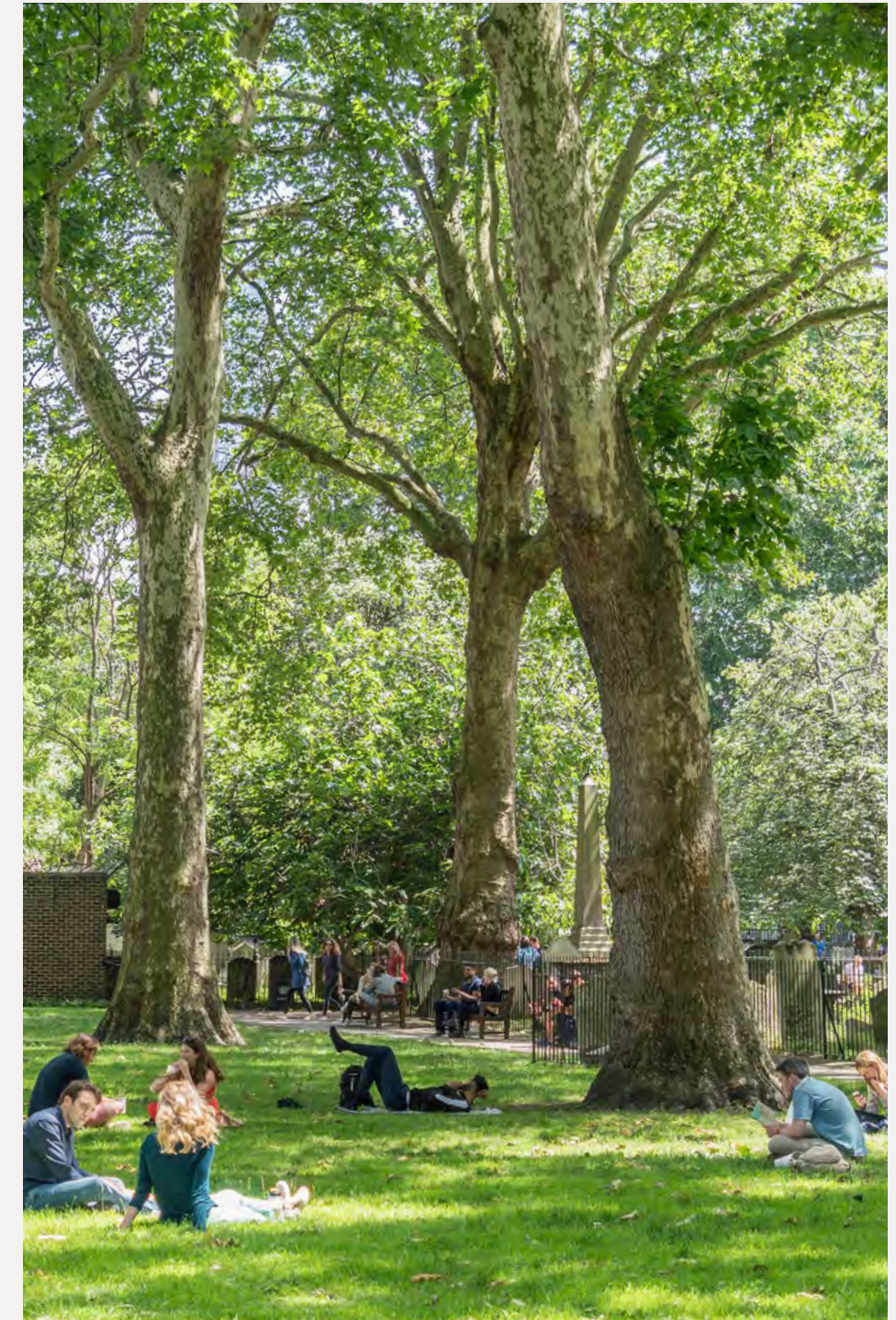
IN



THE



LIFE







6.20am  
**BLOK Shoreditch**  
2 Hearn Street EC2 | [bloklondon.com](http://bloklondon.com)

Multi-disciplinary and modern, where award-winning boutique fitness meets art, design and fashion.



7.45am  
**Ozone Coffee Roasters**  
11 Leonard Street EC2 | [ozonecoffee.co.uk](http://ozonecoffee.co.uk)

Coffee roasters and hospitality experts just across the road.



10.15am  
**The Goodhood Store**  
151 Curtain Road EC2 | [goodhoodstore.com](http://goodhoodstore.com)

An award-winning multi-brand retailer across menswear, womenswear, lifestyle and cosmetics.



12.00pm  
**Gloria**  
54-56 Great Eastern Street EC2 | [bigmammagroup.com](http://bigmammagroup.com)

A 70s Capri-style, all-day-long Trattoria mixing old Italian classics with amazing produce direct from Italy.



12.45pm  
**Lilienblum**  
 80 City Road ECI | lilienblum.co.uk

The first full-service restaurant in London from world renowned celebrity chef Eyal Shani.



3.30pm  
**Lantana**  
 2 Oliver's Yard, 55 City Road ECI | lantanacafe.co.uk

An Australian style café with seasonal menus known for its famous breakfast, brunch and speciality coffee.



6.00pm  
**Fare**  
 11 Old Street ECI | farelondon.com

An all-day restaurant and bar serving up a menu of thin crust pizzas, sharing plates and amazing coffee & cocktails on tap.



8.00pm  
**BRAT**  
 4 Redchurch Street E1 | bratrestaurant.com

Awarded a Michelin star within six months of opening. "It's Welsh meets Basque and it is mind-blowing from the get-go. It's that good. That different. That special." Giles Coren, The Times.



10.20pm  
The Gibson  
44 Old Street ECI | thegibsonbar.london

"An oasis of elegance and Edwardian style, serving up world-class cocktails" BAR Magazine.

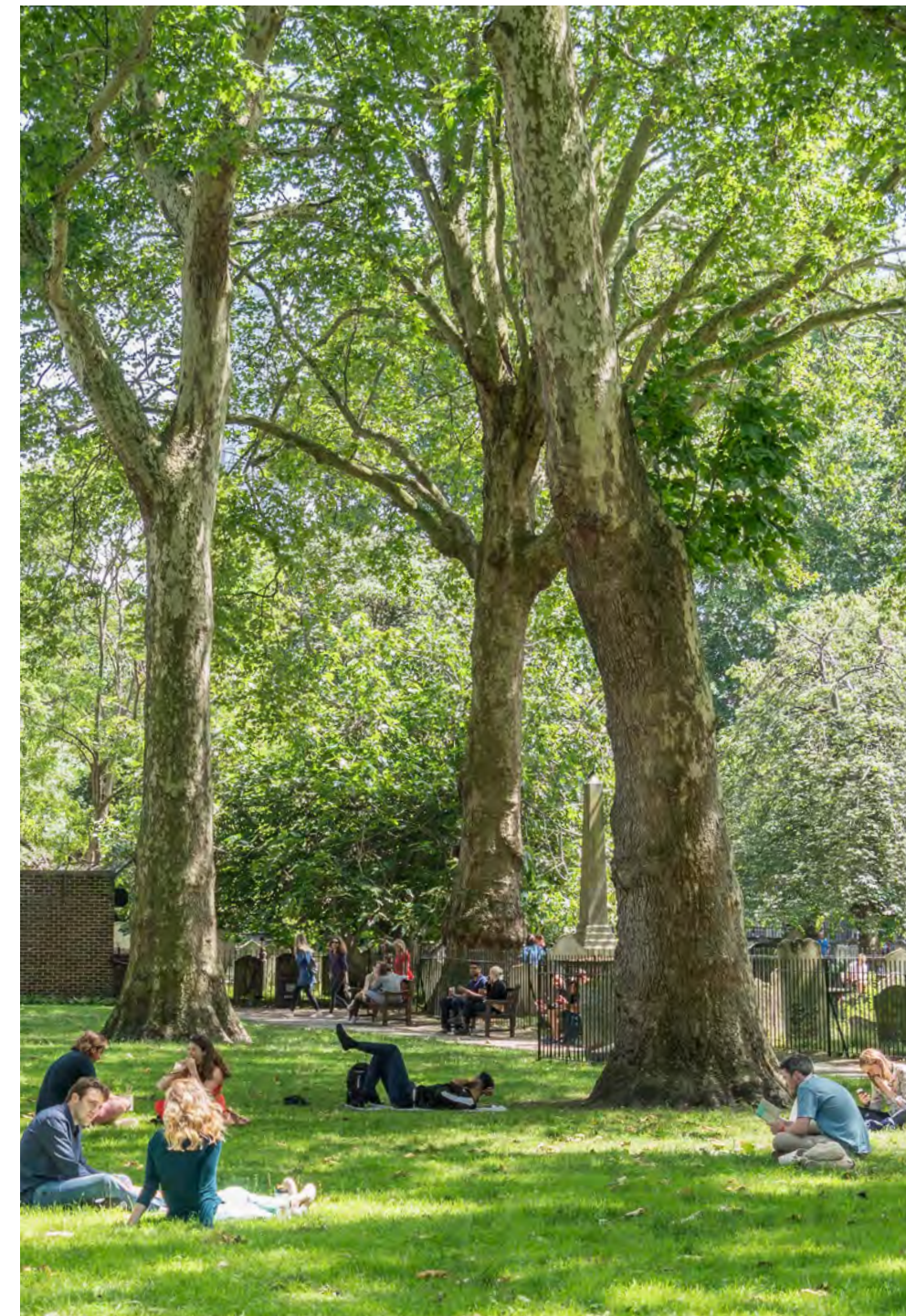


10.55pm  
Old Street Records  
350-354 Old Street ECI | oldstreetrecords.com

The home of live music, cocktails, pizzas and good times in Shoreditch.



Overlooking Bunhill Fields to the south, the area is an oasis of calm and greenery.

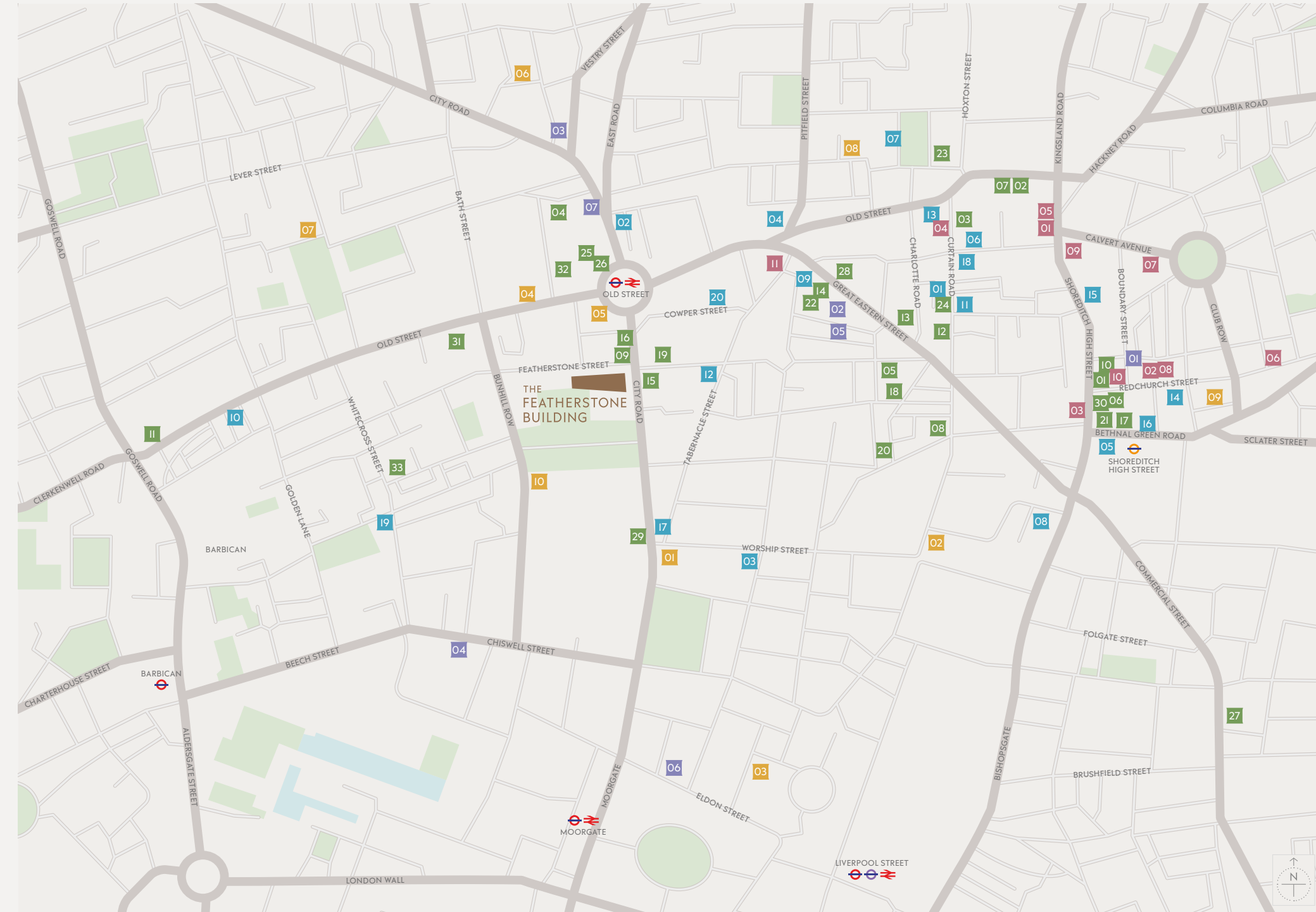


## On your doorstep

Nowhere has a more exciting or eclectic mix than Old Street, which boasts an unparalleled selection of independent coffee houses, many of the best restaurants in London and a broad array of fitness centres, offering employees a range of opportunities in which to enhance their well-being.

After dark there are live music venues, DJ bars, boutique cinemas and private member's clubs, including the internationally renowned Shoreditch House.

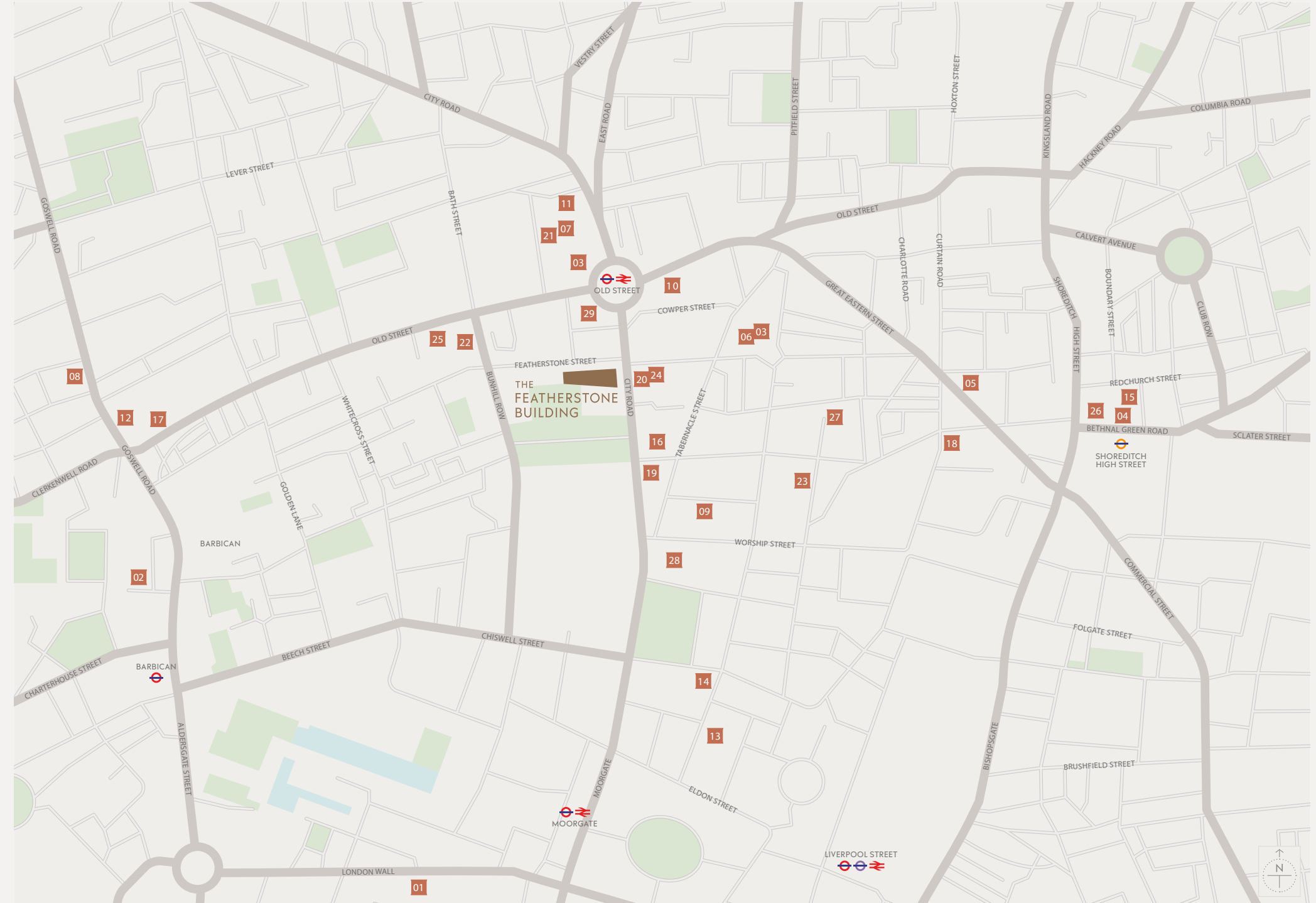
- **EAT**
- 01 Bao Noodle Shop
- 02 The Bike Shed Motorcycle Club
- 03 The Blues Kitchen
- 04 Bone Daddies
- 05 The Book Club
- 06 BRAT
- 07 The Clove Club
- 08 The Curtain Club at Mondrian Shoreditch
- 09 Daffodil Mulligan
- 10 Dishoom
- 11 Fare
- 12 Flat Iron
- 13 Gloria
- 14 Hoxton Grill
- 15 Lantana
- 16 Lilienblum
- 17 Lyle's
- 18 Oklava
- 19 Ozone Coffee Roasters
- 20 Padella
- 21 Pizza East
- 22 The Princess of Shoreditch
- 23 Red Dog Saloon
- 24 Sagardi
- 25 Serata Hall
- 26 Shoreditch Grind
- 27 St. JOHN
- 28 temper
- 29 The Sichuan
- 30 Smoking Goat
- 31 Tayēr + Elementary
- 32 Wagamama
- 33 Whitecross Street Food Market
  
- **DRINK**
- 01 Ballie Ballerson
- 02 Bar Nightjar
- 03 Black Rock
- 04 Bounce
- 05 Boxpark Shoreditch
- 06 Callooh Callay
- 07 Colours Hoxton
- 08 The Crown and Shuttle
- 09 Floripa
- 10 The Gibson
- 11 The Hoxton Pony
- 12 Q Shoreditch
- 13 Old Street Records
- 14 The Owl & Pussycat
- 15 Seed Library
- 16 Shoreditch House
- 17 Singer Tavern
- 18 Strongroom Bar & Kitchen
- 19 Two Brewers
- 20 XOYO
  
- **SHOP**
- 01 AIDA
- 02 A.P.C.
- 03 Carhartt
- 04 The Goodhood Store
- 05 House of Hackney
- 06 Labour and Wait
- 07 Luna & Curious
- 08 Nudie Jeans
- 09 Sneakersnstuff
- 10 Sunspel
- 11 tokyobike
  
- **SLEEP**
- 01 Boundary
- 02 The Hoxton
- 03 M By Montcalm
- 04 The Montcalm
- 05 Nobu Hotel
- 06 South Place Hotel
- 07 The Z Hotel
  
- **WELLNESS**
- 01 Barry's Bootcamp
- 02 BLOK
- 03 Fitness First
- 04 Gymbox
- 05 House of Fitness
- 06 Hoxton Pilates
- 07 Ironmonger Row Baths
- 08 National Centre for Circus Arts
- 09 Psyche
- 10 Virgin Active



## Your neighbours

A hub of creativity and tech, Old Street has the biggest concentration of tech companies of anywhere in Europe, including a Google campus, and is home to numerous leading fashion houses, advertising agencies, music-streaming companies and not-for-profits; its diverse community is what makes it so vibrant and exciting.

- COMMUNITY
- 01 Accenture
- 02 Audible (Amazon)
- 03 The Bower
  - Accenture Song
  - Finablr
  - Incubeta UK
  - WeWork
- 04 Buckley Gray Yeoman
- 05 Colt Technology Services
- 06 Emap
- 07 Farfetch
- 08 GoCardless
- 09 Google Campus
- 10 Inmarsat
- 11 John Brown Media
- 12 Krow communications
- 13 Mimecast
- 14 Monzo
- 15 Mother
- 16 MullenLowe Group
- 17 Next Management London
- 18 NSPCC
- 19 NTT DATA Digital
- 20 Orms
- 21 Pivotal Software
- 22 Pusher
- 23 R/GA
- 24 SAGE Publishing
- 25 Seedrs
- 26 TransferWise
- 27 Vice
- 28 We Are Social
- 29 White Collar Factory
  - Adobe Systems Europe
  - AKT II
  - BGL Group
  - Box.com
  - Brainlabs
  - Capital One
  - The Office Group
  - Spark44



## Transport

Less than a minute's walk away is Old Street underground station, where you can access the Northern Line and National Rail.

Twelve bus routes, including two night buses, stop at or near Old Street station, providing another quick and easy means to reach key parts of town.

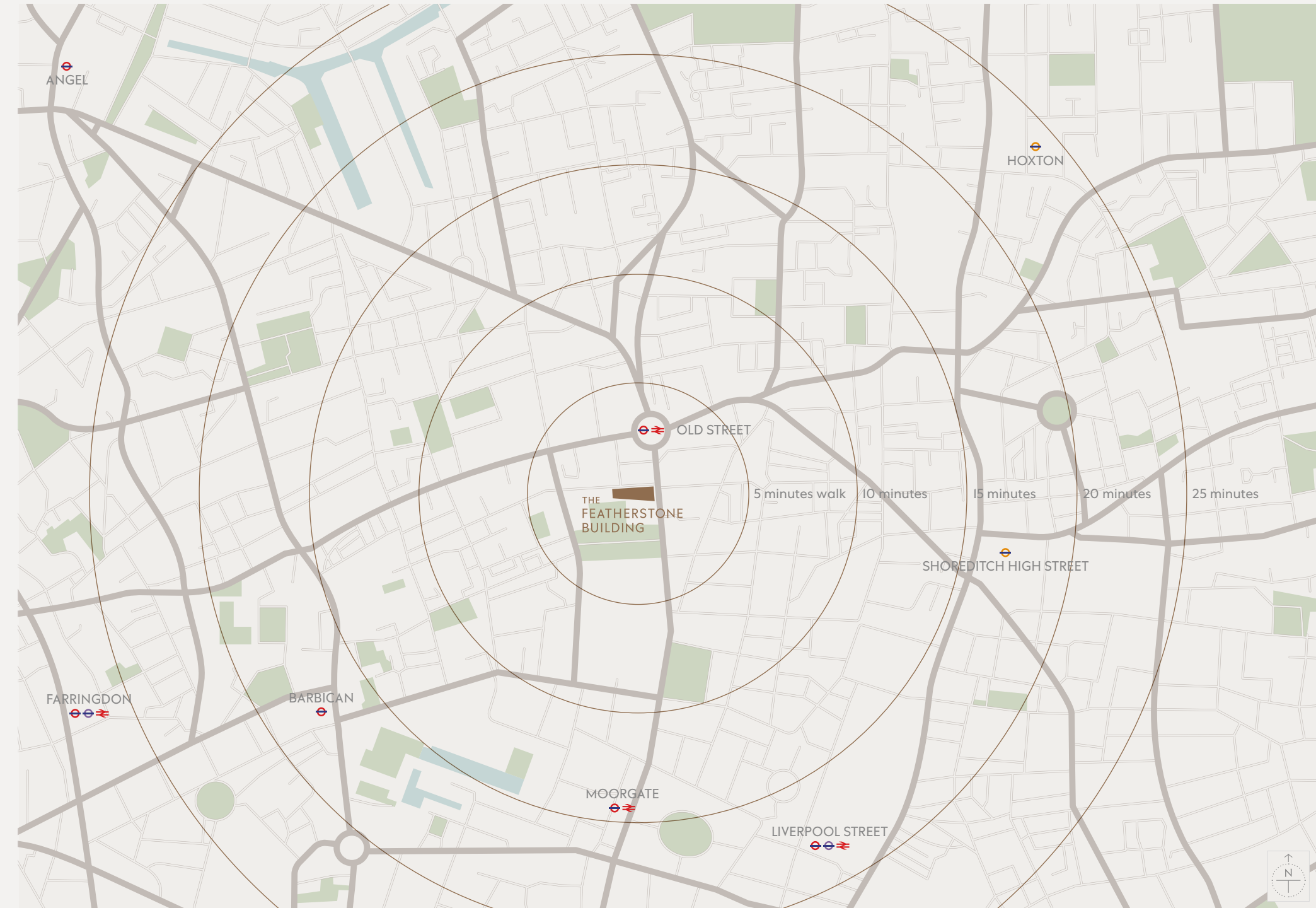
For cyclists, the London Cycle Network Plus provides quieter routes to traverse the city, and runs along Featherstone Street, right outside the building. There are several cycle-hire docking stations in the area and The Featherstone Building has cycle access via its ground floor loading bay, where there is a cycle store for 202 cycles and 84 folding cycles.

UNDERGROUND From Old Street station			
Station	Time	Line	Changes
Moorgate	2 mins	Northern	0
Bank	4 mins	Northern	0
King's Cross St Pancras	5 mins	Northern	0
London Bridge	5 mins	Northern	0
Euston	7 mins	Northern	0
Liverpool Street	8 mins	Northern / Circle	1
Farringdon	10 mins	Metropolitan	1
Oxford Circus	13 mins	Northern / Victoria	1
Tottenham Court Road	14 mins	Northern	1
Waterloo	14 mins	Northern / Jubilee	1
Victoria	18 mins	Northern / Victoria	1
Paddington	18 mins	Northern / Circle / Hammersmith & City	1

Farringdon	2 mins	Elizabeth line*	0
Tottenham Court Road	4 mins	Elizabeth line*	0
Paddington	10 mins	Elizabeth line*	0

AIRPORTS From Old Street station	
Airport	Time
City	29 mins
Luton	42 mins
Heathrow T2 & T3 (Elizabeth line* 33 mins)	49 mins
Gatwick	58 mins
Stansted	69 mins

\*Elizabeth line from Liverpool Street, accessed via Moorgate



## The Elizabeth line

The Featherstone Building is extremely well connected to the rest of the City and beyond, which has improved with the arrival of the Elizabeth line.

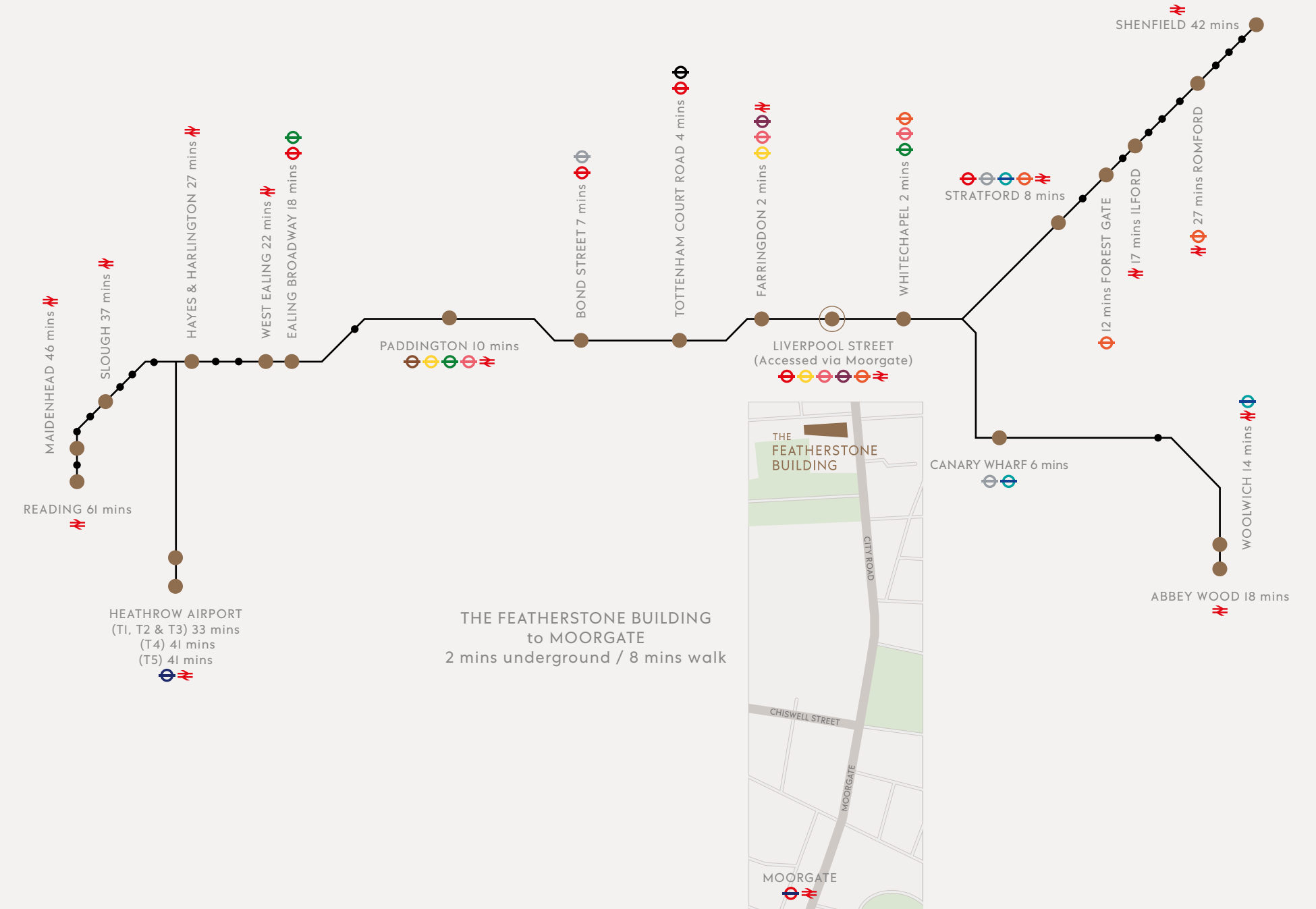
Accessed via Moorgate station, just two minutes away on the Northern line or an eight minute walk, there's quick access to Liverpool Street station, where the Elizabeth line dramatically reduces journey times across London.

From Liverpool Street, Tottenham Court Road is only four minutes away, Canary Wharf six minutes, Stratford eight minutes, and Heathrow terminals between 33 and 41 minutes away.



Top Liverpool Street station upper escalator with inclined lift to Broadgate ticket hall  
Bottom Liverpool Street station entrance at Broadgate

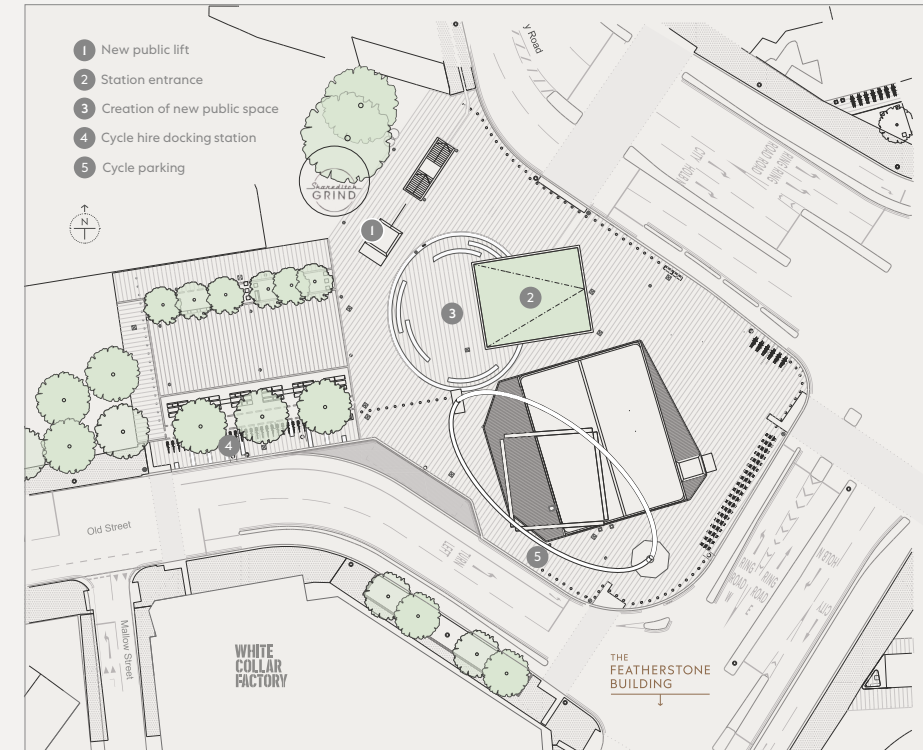
## The Elizabeth line



## Regeneration

The future is bright for Old Street. Transport for London will make the area around Old Street station more pedestrian and cycle friendly. As part of the scheme they are:

- Adding signal-controlled pedestrian crossings and segregated cycle lanes
- Building a new public space around the new station entrance for easier access
- Building a designated public lift into St Agnes Well mall retail concourse



Old Street regeneration  
WestonWilliamson+Partners

Above Station entrance from the northeast,  
looking southwest towards White Collar Factory  
Right Green-roofed station entrance from  
the southwest



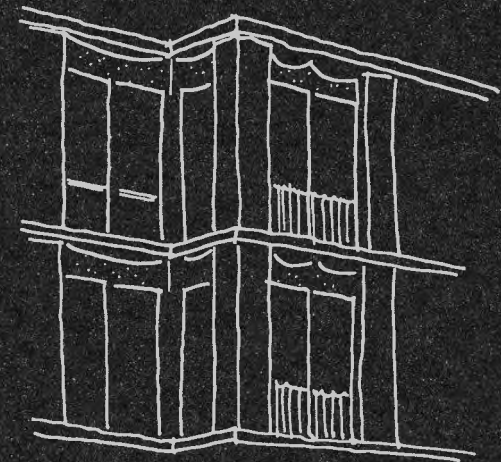




THE SPACE



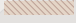


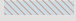
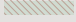
A brickwork façade, exposed concrete ceilings, generous windows and “stepped” design cleverly play down the scale of the structure by conveying the impression of four subtly contrasting buildings. The architecture echoes that of the Victorian warehouses that characterise the local area.

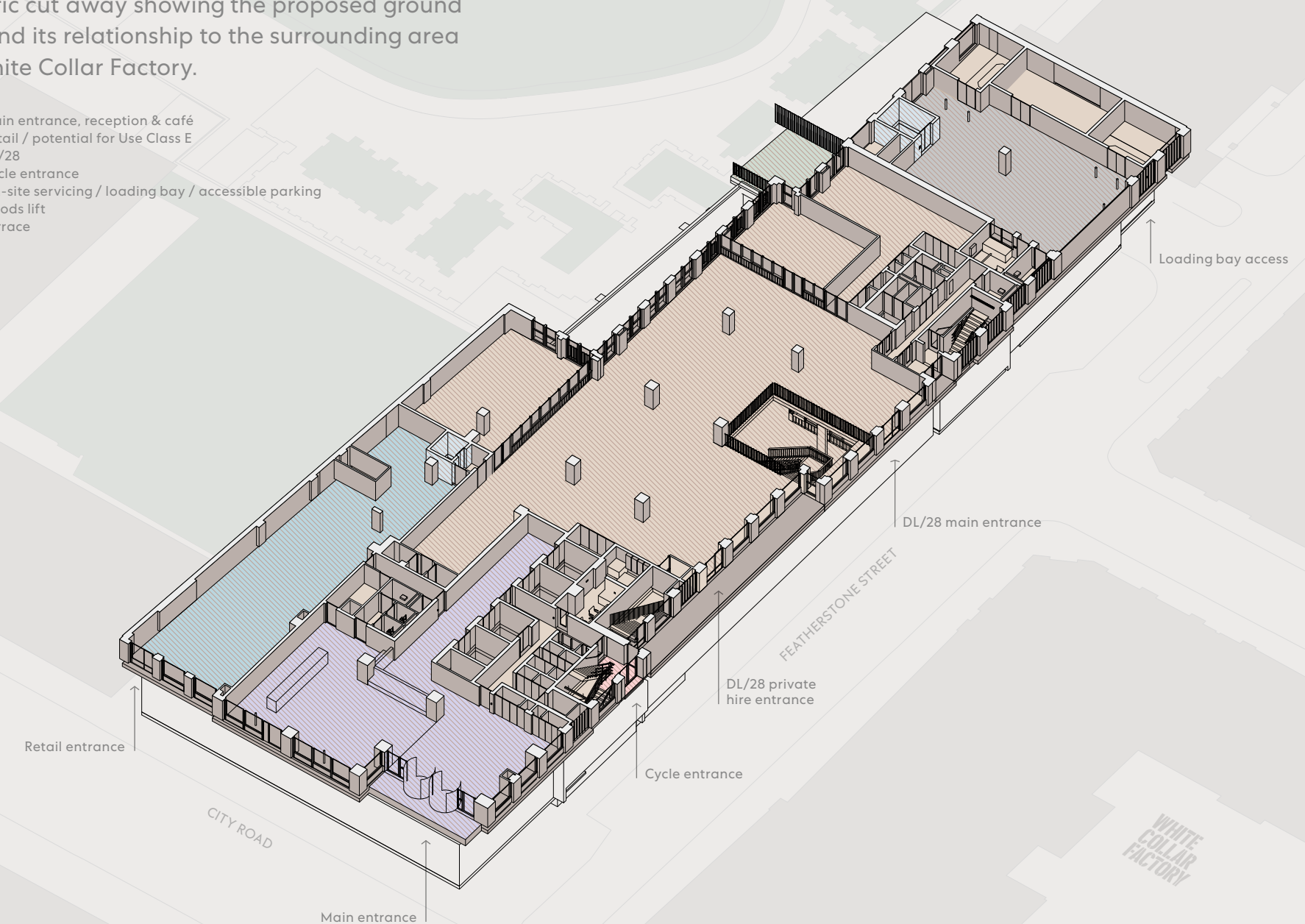
The Featherstone Building takes its inspiration from those warehouses, and is constructed to stand the test of time.



## Site plan

Isometric cut away showing the proposed ground floor, and its relationship to the surrounding area and White Collar Factory.

-  Main entrance, reception & café
-  Retail / potential for Use Class E
-  DL/28
-  Cycle entrance
-  On-site servicing / loading bay / accessible parking
-  Goods lift
-  Terrace



## Key features

- Situated next to Old Street underground and close to the Elizabeth line, accessed via Moorgate
- An Intelligent Building that delivers for the digital future
- Beautifully designed double-height reception with 7.5m floor to ceiling height
- Integrated café, DL/ Service
- 3.125m floor to ceiling height on all floors
- Duplex space over ground and lower ground floors of 13,400 sq ft with Derwent London shared amenity, DL/28
- Efficient floor plates of c.17,000 sq ft on the lower floors (1st - 4th) with soft spots for connectivity between floors, c.7,800 sq ft on the upper floors (5th - 9th) and c.3,600 sq ft on the 10th floor
- Openable windows throughout and exposed concrete ceilings
- Private terraces on ground, 4th, 5th and 10th floors
- Communal roof terrace and pavilion on the 10th floor
- Elegant external architecture using a natural brick palette
- 1 person per 8 sq m occupational density
- Concrete core cooling system allows an industrial aesthetic
- Lower ground cycle store for 202 cycle spaces and 84 folding cycles
- 222 lockers and 21 showers
- Achieved net zero carbon construction on completion
- Achieved EPC Rating 'A'
- Achieved WiredScore Platinum
- Achieved AirScore Design & Operation Gold
- Achieved BREEAM Outstanding
- Achieved LEED Platinum



Entrance on City Road

## Schedule of areas

Floor	Office (NIA)		Terrace (NIA)	
	sq ft	sq m	sq ft	sq m
Tenth	Let to DEPT Agency	Communal	2,996	278
Ninth	Let to DEPT Agency		–	–
Eighth	Let to Buro Happold		–	–
Seventh	Let to Buro Happold		–	–
Sixth	Let to Buro Happold		–	–
Fifth	Let to Buro Happold		–	–
Part Fourth	Let to Tide		–	–
Part Fourth - Furnished + Flexible	1,887	175	–	–
Part Third	Let to Avalere Health		–	–
Part Third - Furnished + Flexible	5,773	536	–	–
Part Second - CAT A	9,724	903	–	–
Part Second - Furnished + Flexible	6,873	639	–	–
First	Let to Marshmallow		–	–
<b>Sub-total</b>	<b>24,257</b>	<b>2,2543</b>	<b>2,996</b>	<b>278</b>
Ground duplex - DL/28	7,891	733	377	35
Lower ground duplex - DL/28	5,546	515	–	–
Ground reception & café	2,950	274	–	–
<b>Total</b>	<b>40,644</b>	<b>3,775</b>	<b>3,373</b>	<b>313</b>

IPMS measurements on request.

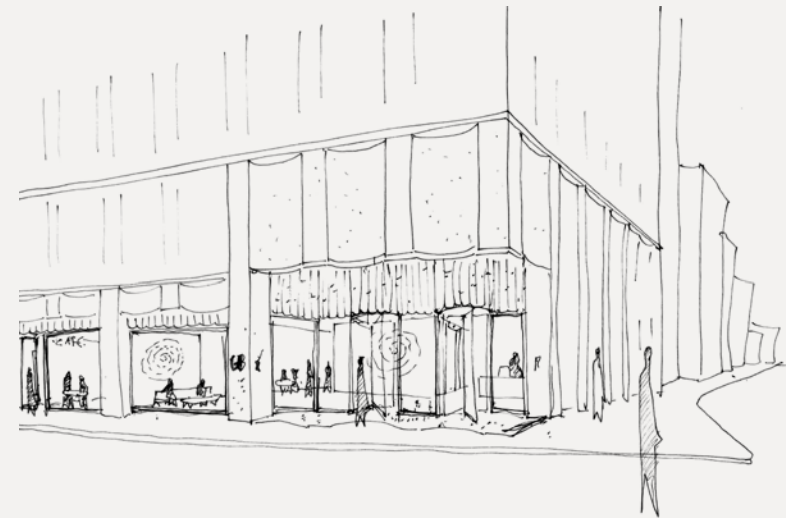


View from Featherstone Street

## City Road façade

The Featherstone Building is characterised by solid vertical brick piers and concave concrete lintels. Viewed from the street it looks like four adjoining warehouse-like structures, though inside it is a single entity that can be configured in multiple ways.

Below Architect's sketch of the City Road entrance



Entrance on City Road

## Reception and café

- 2,950 sq ft combined reception and café
- Double-height entrance space with industrial pendants
- Seating set into window reveals
- Bespoke reception desk
- Integrated café, DL/ Service, open weekdays 7.30-11.30am
- Feature Hugo Dalton bespoke artwork above the reception desk



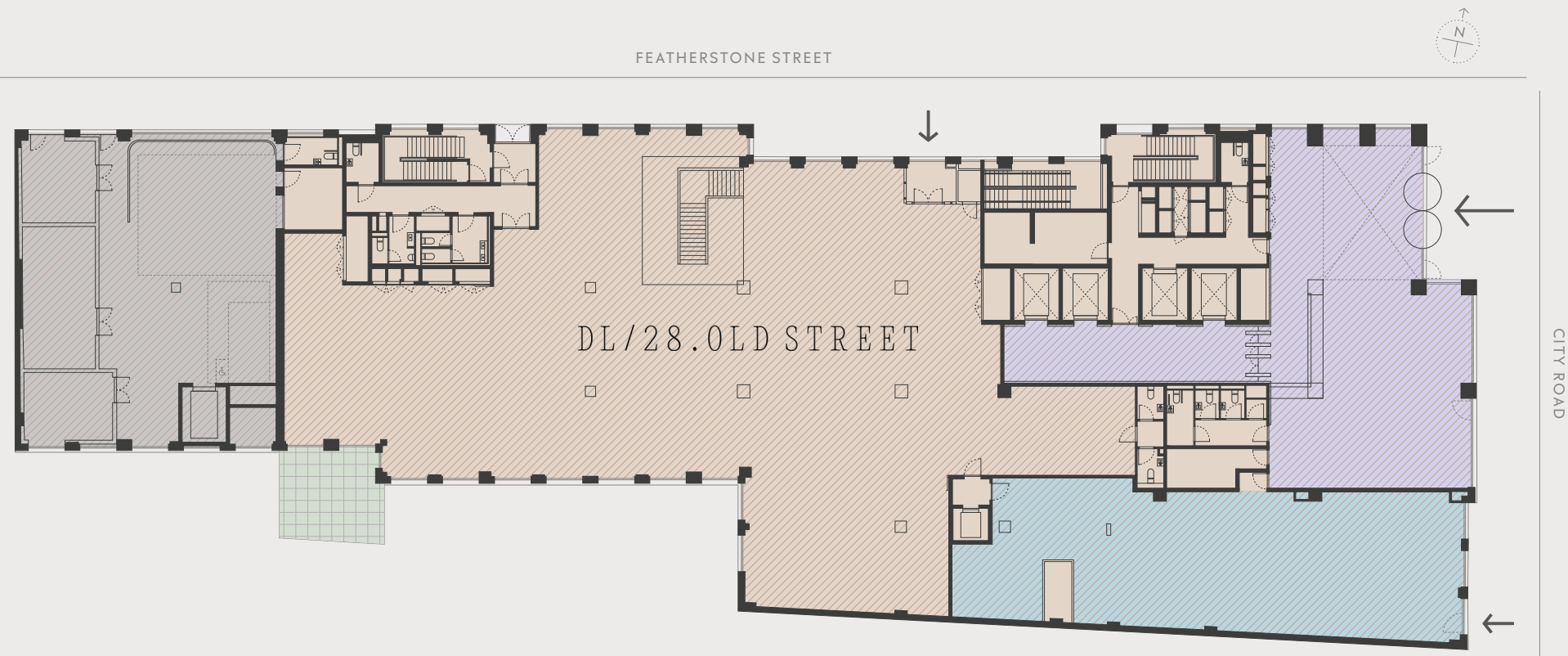
DL/ Service





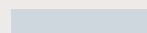

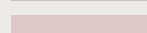
Reception

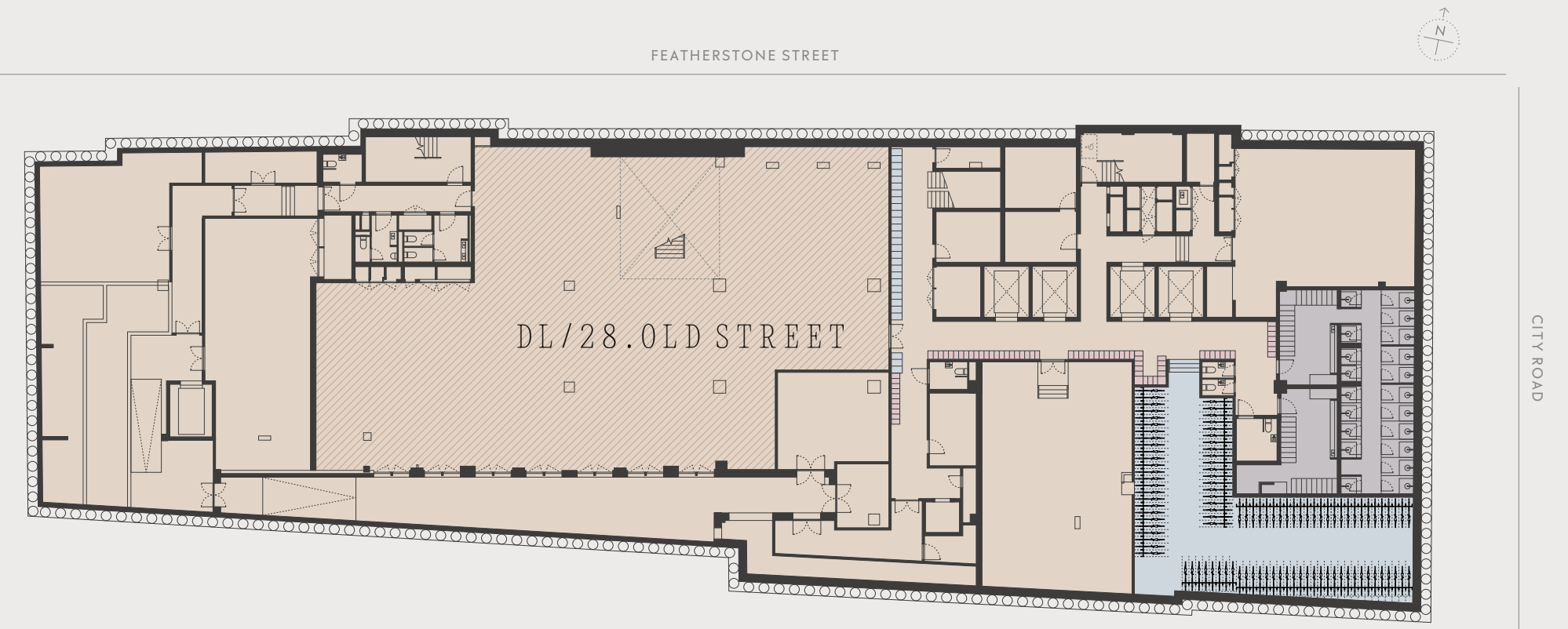
## Ground floor: 7,891 sq ft / 733 sq m

-  Double-height reception & café, DL/ Service
-  Retail
-  Derwent London shared amenity, DL/28
-  Loading bay
-  Common parts
-  Private terrace



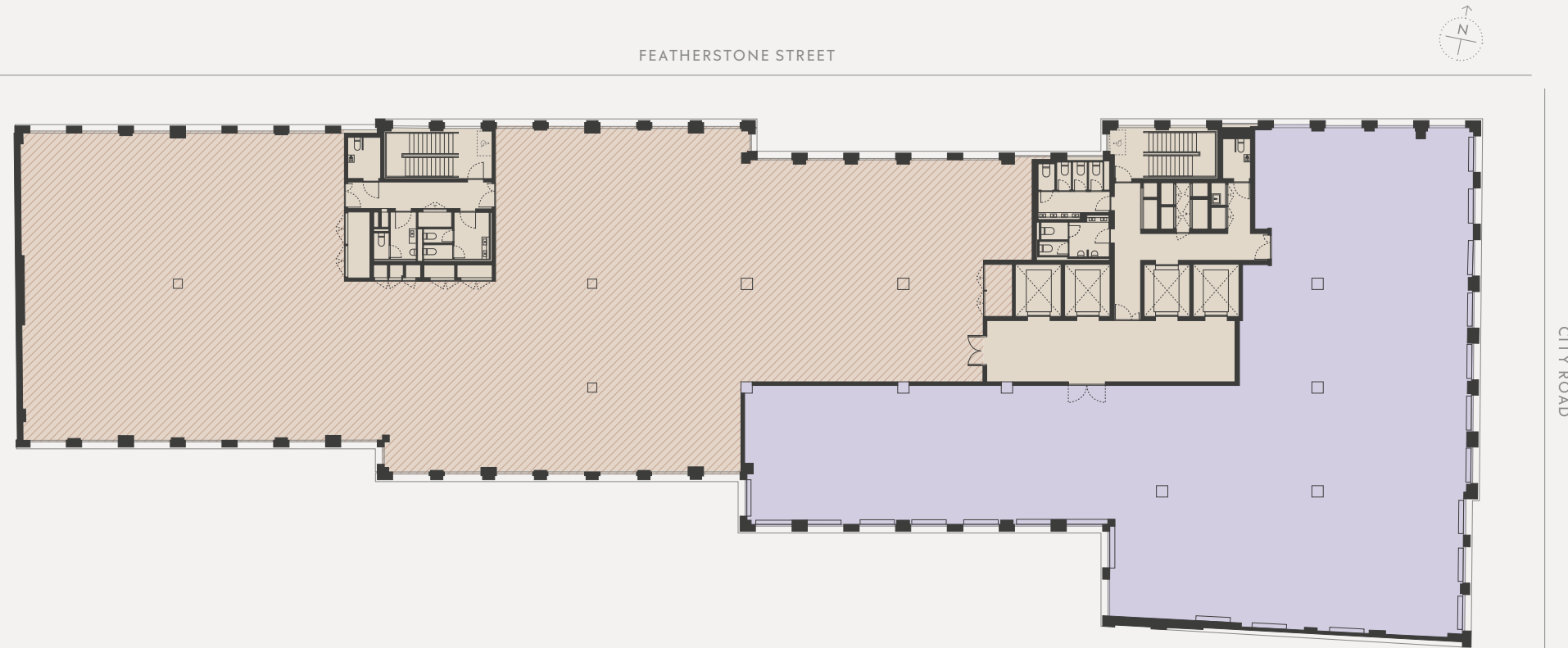
## Lower ground floor: 5,546 sq ft / 515 sq m

-  Derwent London shared amenity, DL/28
-  Common parts
-  Cycle store
-  Showers
-  Lockers



## Second floor (west) - CAT A: 9,724 sq ft / 903 sq m

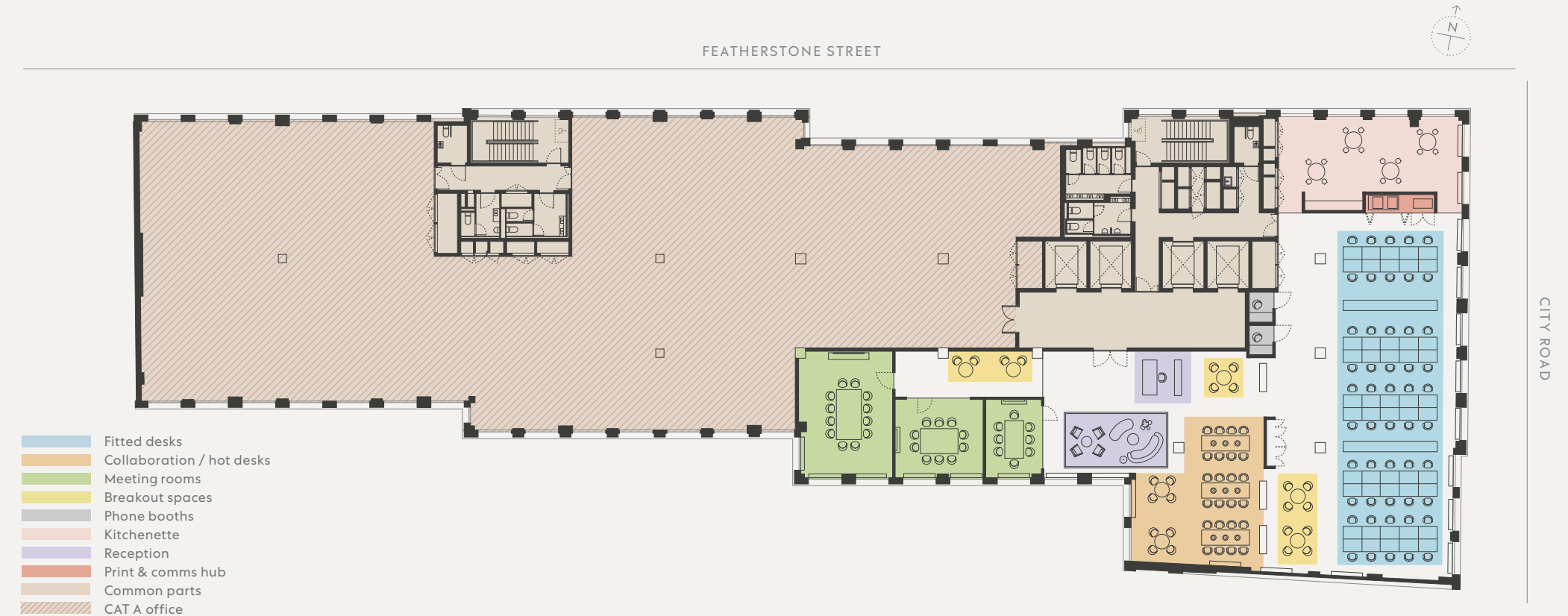
- CAT A office
- Common parts
- Furnished + Flexible



## Second floor (east) - Furnished + Flexible: 6,873 sq ft / 639 sq m

- 50 x fitted desks
- 2 x private phone booths
- WC On-floor WCs
- 1 x 12-person private meeting room  
1 x 10-person private meeting room  
1 x 8-person private meeting room
- Various breakout spaces
- Cabled and enabled with high-speed fibre
- Reception and waiting area
- Kitchenette and seating area
- Town hall / collaboration space (with 24 x hot desks)

FURNISHED + FLEXIBLE

















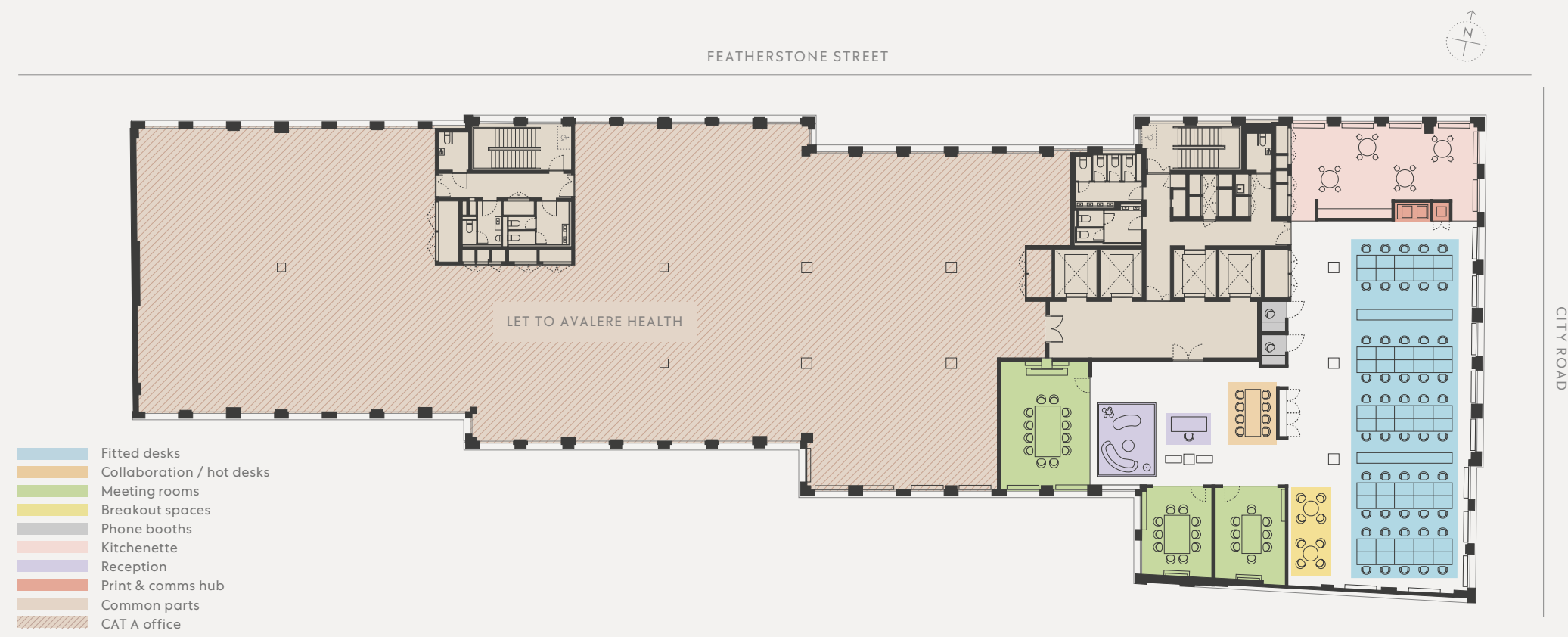
Second floor (west) - CAT A









Second floor (east) - Furnished + Flexible

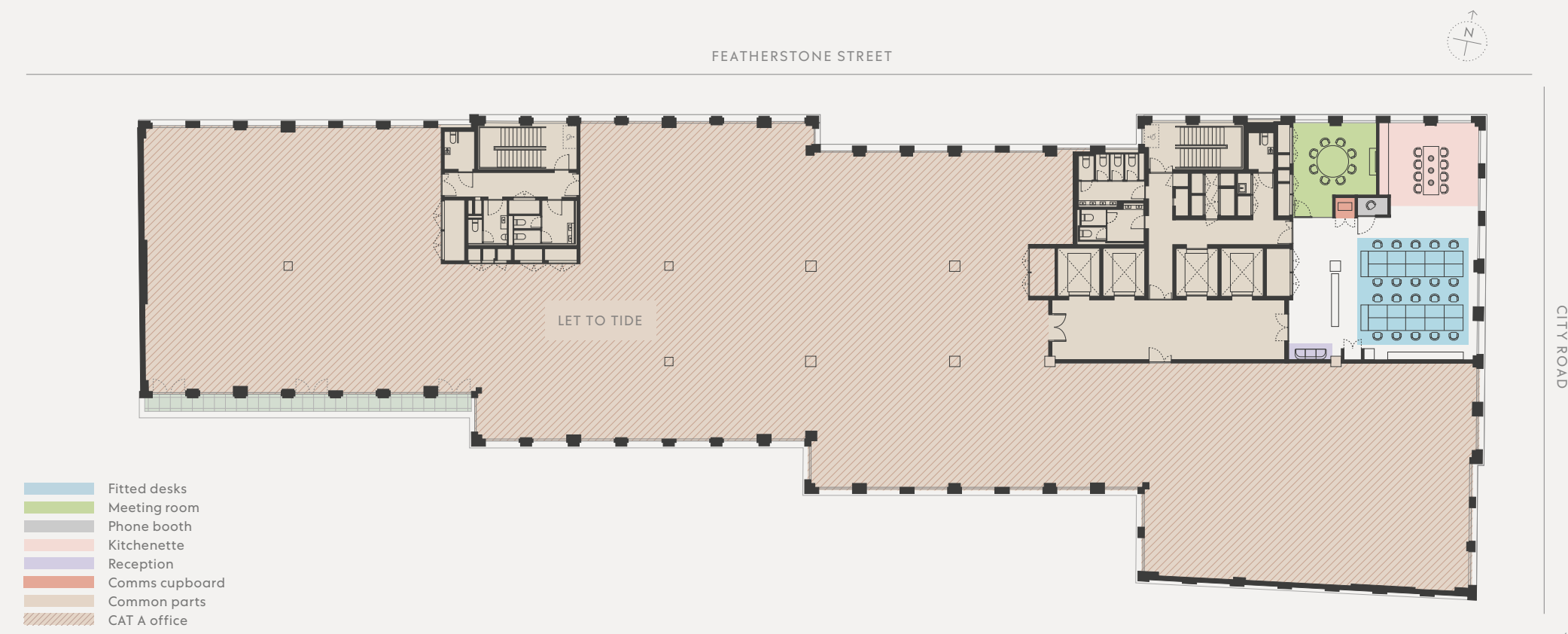
## Third floor - Furnished + Flexible: 5,773 sq ft / 536 sq m

-  50 x fitted desks
-  2 x private phone booths
- WC On-floor WCs
-  1 x 12-person private meeting room
-  Various breakout spaces
-  Cabled and enabled with high-speed fibre
-  1 x 10-person private meeting room
-  Reception and waiting area
-  1 x 8-person private meeting room
-  Kitchenette and seating area
-  Town hall / collaboration space (with 8 x hot desks)



## Fourth floor - Furnished + Flexible: 1,887 sq ft / 175 sq m

-  20 x fitted desks
-  Kitchenette and seating area
-  1 x 8-person private meeting room
- WC On-floor WCs
-  1 x private phone booth
-  Cabled and enabled with high-speed fibre
-  Waiting area





Furnished + Flexible (indicative of third and fourth floors)



Furnished + Flexible (indicative of third and fourth floors)

## Roof terraces

The building features multiple terraces; places to reflect, take a breather or enjoy with colleagues in the warm weather.

4th floor  
183 sq ft

5th floor  
3,494 sq ft

10th floor  
848 sq ft (private)  
2,996 sq ft (communal)

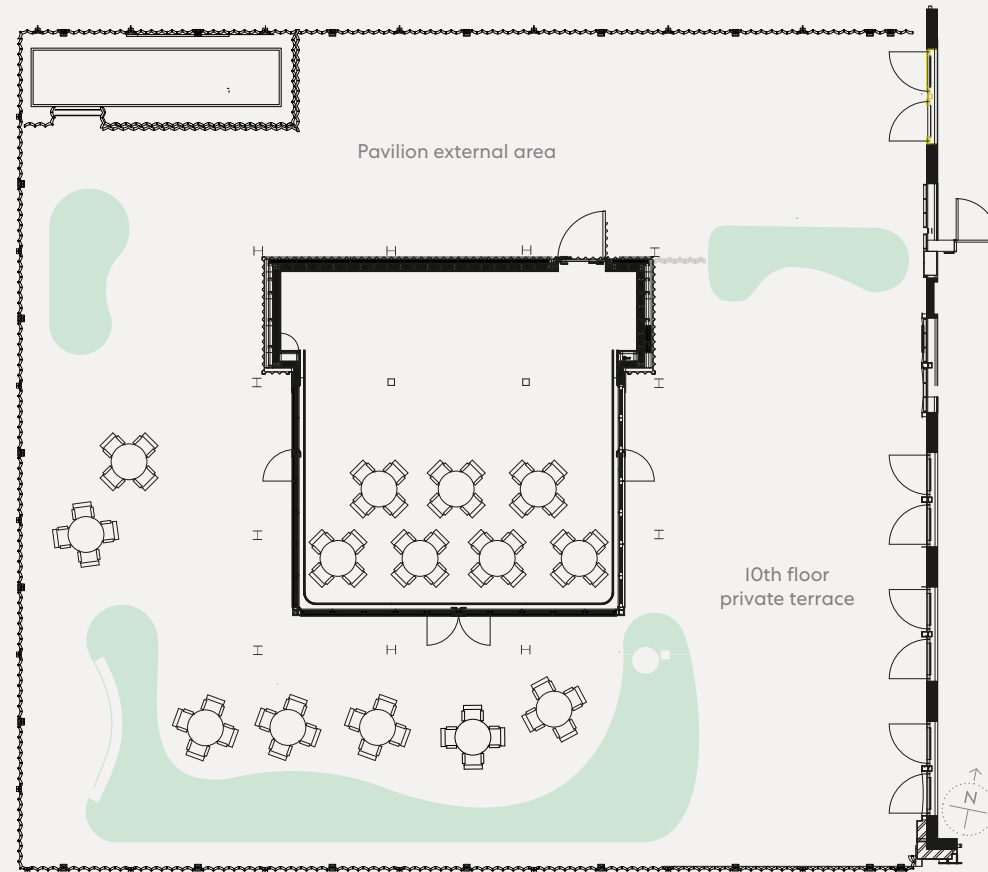


Fifth floor terrace

## 10th floor rooftop pavilion

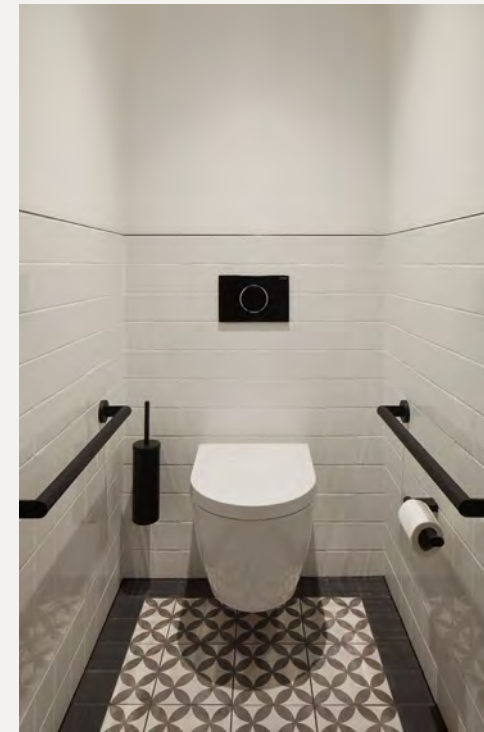
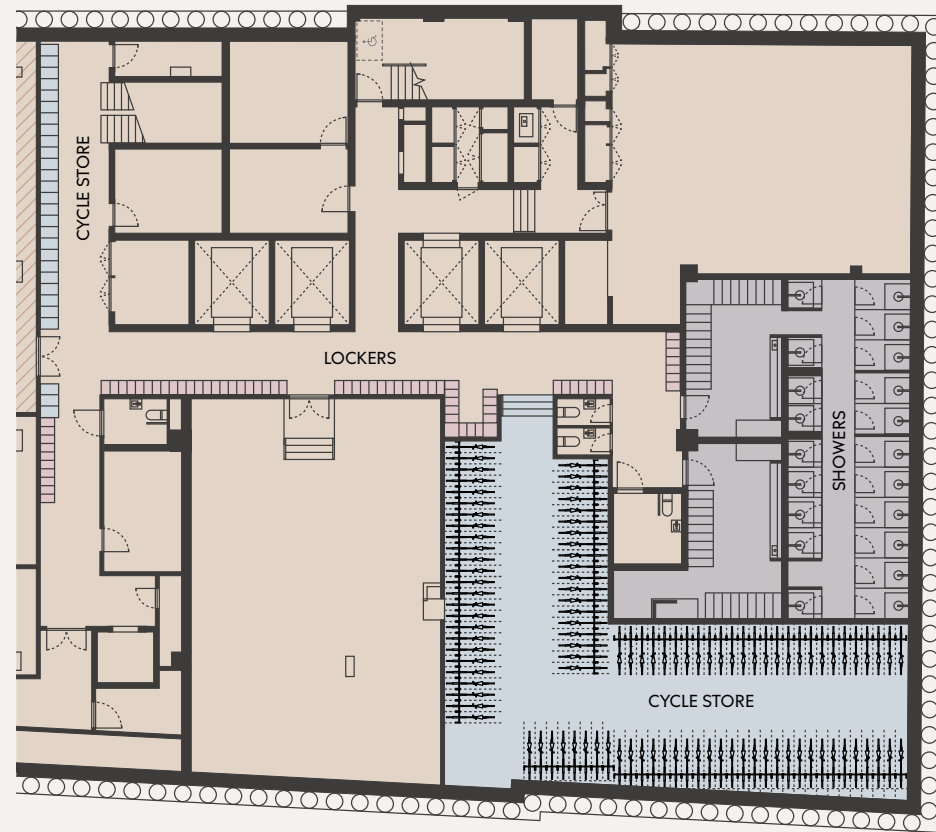
The 10th floor pavilion is a vibrant biophilic space above the treescape of Bunhill Fields.

It is a sanctuary for connection and collaboration for the sole use of the office tenants, providing a calming space for informal working.



## Lower ground cycle storage

- 202 cycle spaces
- 84 folding cycle lockers
- 222 lockers
- 21 showers including  
4 flexible unisex cubicles

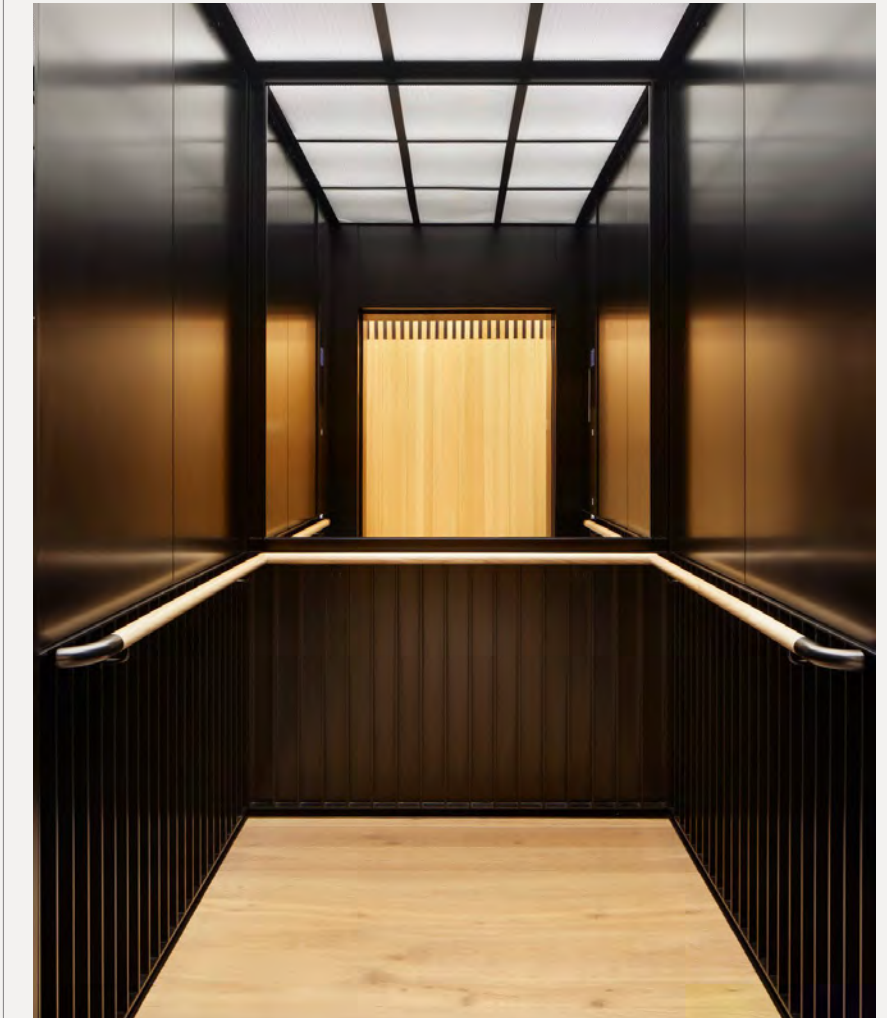


## Core and lifts



## Design details

- Band-sawn oak flooring
- Concrete walls and soffit  
with exposed services
- Schindler passenger lifts



## Responsible development

As a responsible business, sustainability is deeply ingrained in everything we do.

Our sustainability strategy encompasses green finance, the highest environmental standards throughout our supply chain, responsible management of our existing portfolio and helps drive the creation of some of London's most innovative new office developments.

Derwent London has been at the forefront of pushing for the highest sustainability standards for many years, underlined by our recent commitment to achieve net zero carbon (NZC) by 2030.



Top 80 Charlotte Street, WI entrance  
Above 80 Charlotte Street, WI elevation

## Key milestones on our journey to Net Zero Carbon by 2030



## A sustainable building curated by a responsible developer

We are committed to designing, delivering, and operating our buildings responsibly and The Featherstone Building is no exception. That is why the following features are provided to meet our NZC goals, enhance occupier wellbeing and support wildlife.

### ACHIEVING NET ZERO CARBON

#### Energy consumption & costs



**Total anticipated operational carbon use** expected to be 50% less than best practice standards (based on REEB 2019 standards) – equivalent to 933 people moving to a plant-based diet.

**Annual water consumption** expected to be 55% less due to water efficiency measures – equivalent to 2.2 Olympic sized swimming pools.

**The Concrete Core Cooling** solution lowers operational energy use generating a 25% cost saving, lowers embodied carbon and extends the building's life.

**The building will be supplied** with 100% renewable electricity and gas.

**Onsite solar PV panels** will provide 2% of the energy for the building.

**Enhanced sub-metering** will enable occupiers to monitor their electricity and heat consumption.

#### Responsible construction



**Low carbon concrete** was used during construction, lowering the embodied carbon intensity of the building.

**Use of pre-fabricated materials** reduces pollution during construction.

**Any carbon emissions** created by the building which cannot be eliminated will be offset using certified schemes.

**All timber used** in construction is FSC/PEFC certified.

### ENHANCING WELL-BEING



**Active by design:** the striking precast-concrete staircase encourages you to take the stairs over the lift, helping to add some extra activity in your busy workday.

**Fresh air:** openable windows and enhanced ventilation providing fresh air at your fingertips.

**Natural light:** floor-to-ceiling glazing and generous 3.125m ceiling heights flood natural light into the office, creating a bright and spacious environment.

**286 cycle spaces** with shower facilities allow occupiers to easily cycle to work, which is great for wellbeing and the environment.

**Thermal comfort:** the brick and solar coated glass façade reduces solar gain to help reduce overheating.

**WELL fit-out:** building designed to support this certification.

### ENCOURAGING WILDLIFE



**Biodiverse green roofs** will provide a habitat for local wildlife.

**We are pleased to support** the London Wildlife Trust at their Woodberry Wetlands Centre in Hackney – this initiative will help restore reedbed habitats and increase the diversity of wildflowers.

### STANDARDS



**BREEAM** Outstanding

**LEED** Platinum

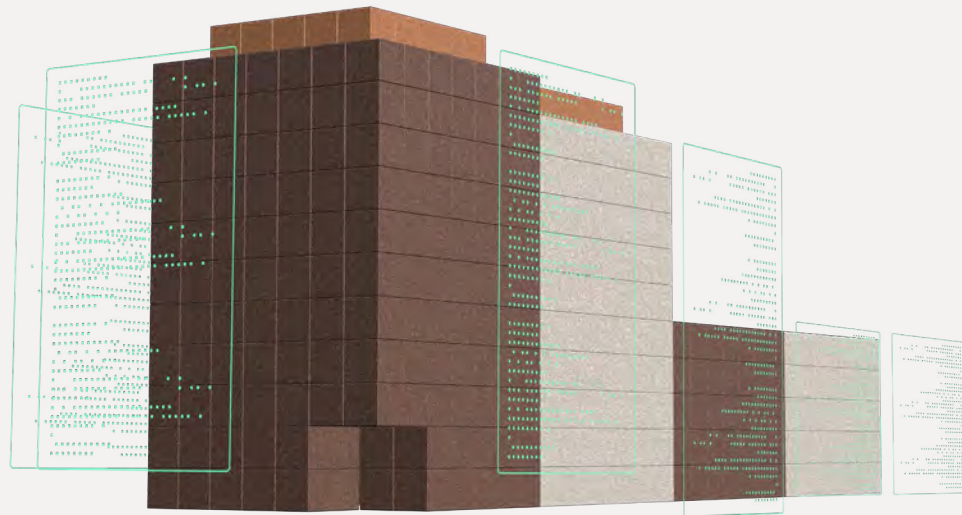
**EPC** Energy Performance Certificate Rating 'A'



## An Intelligent Building that delivers for the digital future

The Featherstone Building is a Derwent London Intelligent Building.

State-of-the-art technology and software reads data collected by thousands of sensors throughout the building. The Featherstone Building's software platform processes the data (such as energy usage, space utilisation, indoor air quality and hundreds of other data points) and intelligently learns how to maximise operational efficiencies, improve performance and comfort, minimise energy use, carbon emissions and energy costs and reduce maintenance and service charge costs.



## State-of-the-art digital enablement



### Integrated building software and systems

All the building's systems and services are all interconnected through Derwent's Intelligent Building software, built on Microsoft infrastructure. Smart sensors read information generated (energy usage, internal air quality, population density, busiest lift times, quietest shower times) and intelligently change and tweak the building's systems to keep costs down and improve wellbeing.



### Integrated digital team

Work in partnership with Derwent London's in-house experts and Intelligent Building team who specialise in innovation, software development, cyber security and building automation to create a customised solution that maximises your space, productivity and efficiency.



### Smart enabled amenities

Book meeting rooms, sign-in guests, open doors and call lifts touch-free via the Derwent London App.



### Cyber security

Your office data is delivered via a cloud-based dashboard and all systems are protected with a state-of-the-art cyber security framework meaning you and your data are protected from modern cyber threats.



### Energy and costs savings

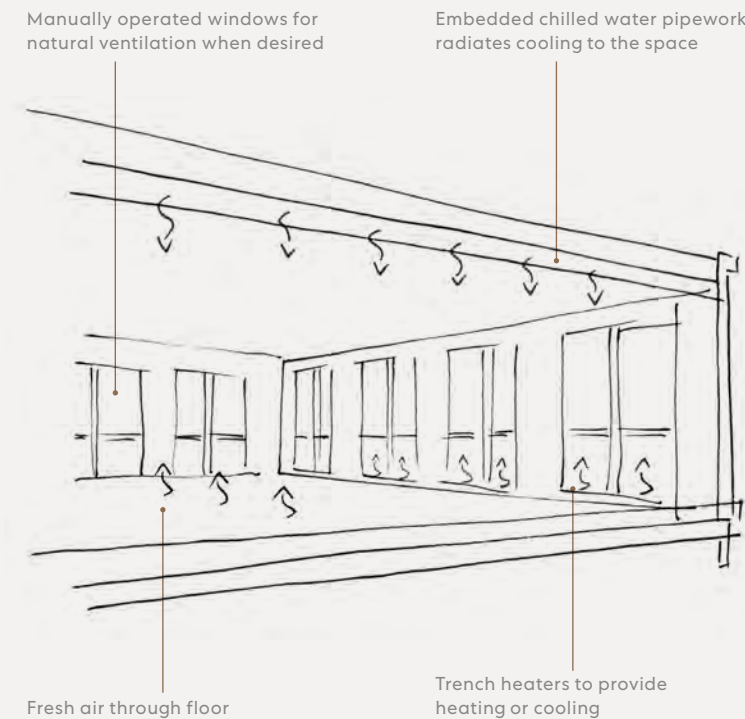
By using technology to focus on energy efficiencies, this has an inherent commitment to driving down costs.

**The Featherstone Building will be a digitally enabled building ready for the digital future.**

## Concrete Core Cooling (CCC)

Following White Collar Factory, Derwent London are integrating a CCC system into the building design at The Featherstone Building.

Unlike conventional air conditioning, CCC works with the thermal mass of the building's concrete structure to absorb the heat generated in the office. A network of chilled water pipes is embedded in the concrete, providing radiant cooling to the office environment. Additional heating, if required, is provided using hot water in trench heaters located around the office perimeter.



## Benefits of CCC include:

### High ceilings

A 3.125 m floor to soffit height provides excellent daylight penetration, greater flexibility for fitting out, and improved comfort levels.

### Natural ventilation

The building is designed with openable windows throughout, to enable natural ventilation whenever outside temperatures are between 14°C and 25°C (approximately 50% of occupied hours per year). This puts people in charge of their environment and provides a connection to the outside world, all controlled by the building's occupiers.

### A clean ceiling with an industrial aesthetic

Uncluttered soffits make partitioning efficient to install, and ongoing alterations easy, providing maximum flexibility for a wide range of occupiers.

### Carbon benefits

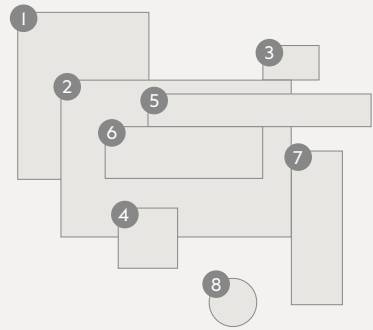
Using low cement content, exposed fair-faced concrete minimises our carbon footprint. Lower carbon emissions and operating costs also improve energy performance. CCC also harvests free night time cooling, which is stored for slow daytime release.

### Passive & non-intrusive system

Low air movement means reduced draughts and provides for a quiet / calm working environment.

## Materiality

The Featherstone Building's exterior is clad in contrasting monochromatic shades of brick, and features generous filigree metalwork windows.



### Materials Palette

- 1 Rough hewn and acid etch smooth light grey concrete
- 2 Rough hewn and acid etch smooth charcoal concrete
- 3 Textured concrete charcoal paving slabs
- 4 Textured concrete light grey paving slabs
- 5 Window system – bronze finish industrial C channels
- 6 Handmade cinder grey brickwork
- 7 Handmade soft buff brickwork
- 8 Bronze finish metalwork



# Technical specification

Occupancy		Grids	
Workplace density (NIA per workspace)	8 m <sup>2</sup>	Planning grid	1.5 m x 1.5 m
Means of escape (NIA per person)	6 m <sup>2</sup>	Column grid	6.0 m x 9.0 m
Core elements (NIA per person)	10 m <sup>2</sup>		
On floor services (NIA per workspace)	8 m <sup>2</sup>		

## Floor plate efficiency NIA:GIA

Lower ground	28%
Ground	60%
First	86%
Second	87%
Third	87%
Fourth	86%
Fifth	80%
Sixth	81%
Seventh	81%
Eighth	81%
Ninth	81%
Tenth	76%

## Plan depth & ceiling height

Window to window	21 m
Window to core	10 m – 13 m

## Floor to ceiling height

Lower ground	2.625 m – 3.125 m
Ground	3.750 m
Office floors (1st – 10th)	3.125 m

## Circulation

Percentage of primary circulation to NIA	20%
--	-----

## Toilet provision

NIA per person	8 m <sup>2</sup> (1:8)
Male/female ratio	60% / 60%

## Cycling provision & showers

202 secure cycle spaces	1 per 7 staff
84 folding cycle spaces	1 per 17 staff
Shower facilities	1 per 60 staff
Male/female ratio	50% / 50%
Secure lockers	0.7 per cycle space

## Lifts

4 passenger lifts	1400w x 2400d x 2600h	1,600kg, 21 person
Retail goods / accessible lift	1100w x 1400d x 2200h	630kg, 8 person
Loading bay goods lift	1500w x 2700d x 2700h	2,000kg, 26 person

Car loading	80%
Waiting time (up-peak)	25 seconds
Handling capacity (up-peak)	12%
Waiting time (two way lunchtime)	35.2 seconds
Handling capacity (two way lunchtime)	13%
NIA per person	8 m <sup>2</sup>
Hall call system: time to destination	< 80 seconds

Raised floors		Comfort	
Typical floors	300 mm (overall)	Airtightness	3 m <sup>3</sup> /hr/ m <sup>2</sup>
		Outdoor air	15 l/s
		Occupancy	8 m <sup>2</sup>

## Structural loadings

Live:		Air conditioned space:	
Office floors	3.5 kN/m <sup>2</sup>	Summer	24° C +/- 2° C
		Winter	21° C +/- 2° C

Dead:		Mixed mode / natural vent:	
Partitions	1.0 kN/m <sup>2</sup>	Summer	24° C +/- 2° C
Loading bay	5.0 kN/m <sup>2</sup>	Winter	21° C +/- 2° C
Plant room	7.5 kN/m <sup>2</sup>		
Retail space	4.0 kN/m <sup>2</sup>		
Floors, ceilings & services	0.85 kN/m <sup>2</sup>		

## Small power

Loading diversified on floor distribution	25W/m <sup>2</sup>
Diversified load (1000 m <sup>2</sup> )	25W/m <sup>2</sup>

## Lighting

Daylighting (target)	2%
----------------------	----

Average maintained illuminance:	
VDU use	350-400 lux
Unified glare rating (UGR)	19
Electrical load allowance	12W/m <sup>2</sup>
Lighting design load	7W/m <sup>2</sup>

## Noise criteria

External noise intrusion:	
Open plan	NR38 (Leq)
Speculative	NR38 (Leq)
Cellular offices	NR38 (Leq)

## Sustainability

BREEAM	Achieved Outstanding
LEED	Achieved Platinum
EPC	Achieved Rating 'A'

## Fibre

WiredScore	Platinum
------------	----------

# Technical specification

## External finishes

### Façade

- Robust brick piers with precast-concrete scalloped spandrel panels and central mullions in two colour palettes, light and dark brickwork
- Bronze finish curtain walling system with openable windows and bespoke channel detailing

### Doors

- Glazed capsule doors to main entrance, with bespoke bronze finish channel detailing and curtain walling at high level
- Glazed aluminium door to other ground floor entrances with bespoke bronze finish channel detailing and curtain walling
- Full-height doors on office floorplates with bespoke bronze finish Juliette balcony balustrading
- Full-height metal doors to external terraces

## Retail shell & core

### Walls

- Exposed concrete surface, blockwork, and plasterboard walls

### Floors

- Concrete screed

### Ceiling

- Exposed concrete soffit

### Doors

- Glazed aluminium doors to main entrance, with bespoke bronze finish channel detailing and curtain walling

## Main reception area & café space

### Walls

- External brickwork continues internally, with precast-concrete cladding at high level
- Exposed concrete structural beams
- White-painted acoustic plaster finish at high level and bespoke artwork by Hugo Dalton
- Oak timber cladding to rear wall with concealed doors
- Bronze finish curtain walling

### Floors

- Warm-tone diamond polish concrete screed with exposed aggregate

## Ceiling

- Exposed concrete soffit
- Hanging lights and exposed conduits and sprinkler pipework

## Doors

- Glazed capsule doors to main entrance, with bespoke bronze finish channel detailing and curtain walling at high level
- Glazed aluminium door to café entrance with bespoke bronze finish channel detailing and curtain walling

## Reception desk

- Bronze finish expressive metal panels with fin detailing and diamond ground concrete surface

## Office space

### Walls

- Fair-faced concrete to core walls
- Bronze finish curtain walling with metal infill panels

### Floors

- 600 x 600 mm fully accessible raised access floor

### Ceiling

- Exposed concrete soffit
- Hanging lights and exposed conduits and sprinkler pipework

### Doors

- Full-height office entrance doors with glazed vision panel

### Blinds

- Concealed manual roller blinds

## Core

### Walls

- Fair-faced concrete to core walls

### Floors

- Rough-sawn oak board flooring

### Ceiling

- Exposed concrete soffit
- Hanging lights and exposed conduits and sprinkler pipework

### Doors

- Black powder-coated glazed doors, bathroom doors and riser access doors

## Passenger lifts

### Walls

- Black powder-coated expressive metal detailing and wall finish
- Mirror to rear, timber handrail

### Floors

- Oak board flooring

### Ceiling

- Light box with perforated bronze finish metal panel below

### Doors

- Black powder-coated metal doors

## Stairs

### Walls

- Fair-faced concrete

### Floors

- Polished concrete screed

### Ceiling

- Exposed concrete soffit
- Hanging lights and exposed conduits

### Doors

- Black powder-coated glazed doors

### Handrail

- Oak handrail

## WCs

### Walls

- White ceramic tiles with black metal trim
- Unpainted rough finish plaster to main space
- White painted plasterboard to cubicles

### Floors

- Pattern ceramic tile

### Ceiling

- Exposed concrete soffit to main space
- White painted plasterboard ceiling to cubicles
- Hanging and recessed lights and exposed conduits and ductwork

### Doors

- Grey timber veneer finish doors to cubicles
- Black powder-coated bathroom doors to main space

## Fixtures

- White floor standing ceramic WC pans, with black finish exposed wall mounted cistern
- Mahogany toilet seat
- Precast-concrete basins, black PVD coated taps and controls
- Undermounted black metal waste bin
- Black metal frame mirror
- Black PVD toilet roll holders, toilet brush, hooks, stops and ironmongery

## Showers

### Walls

- White ceramic tiles with black metal trim
- Unpainted rough finish plaster to changing-room space
- Full-height tiling to shower cubicles

### Floors

- Pattern ceramic tile

### Ceiling

- Exposed concrete soffit to changing-room space
- White painted plasterboard ceiling to shower cubicles
- Hanging and recessed lights and exposed conduits and ductwork

### Doors

- Black laminate doors and side panels to cubicles
- Black powder-coated bathroom doors to main space

### Fixtures

- Black metal and oak benches
- Precast-concrete basins, black PVD coated taps, showers and controls
- Undermounted black metal waste bin
- Black metal frame mirror
- Black PVD hooks, stops and ironmongery

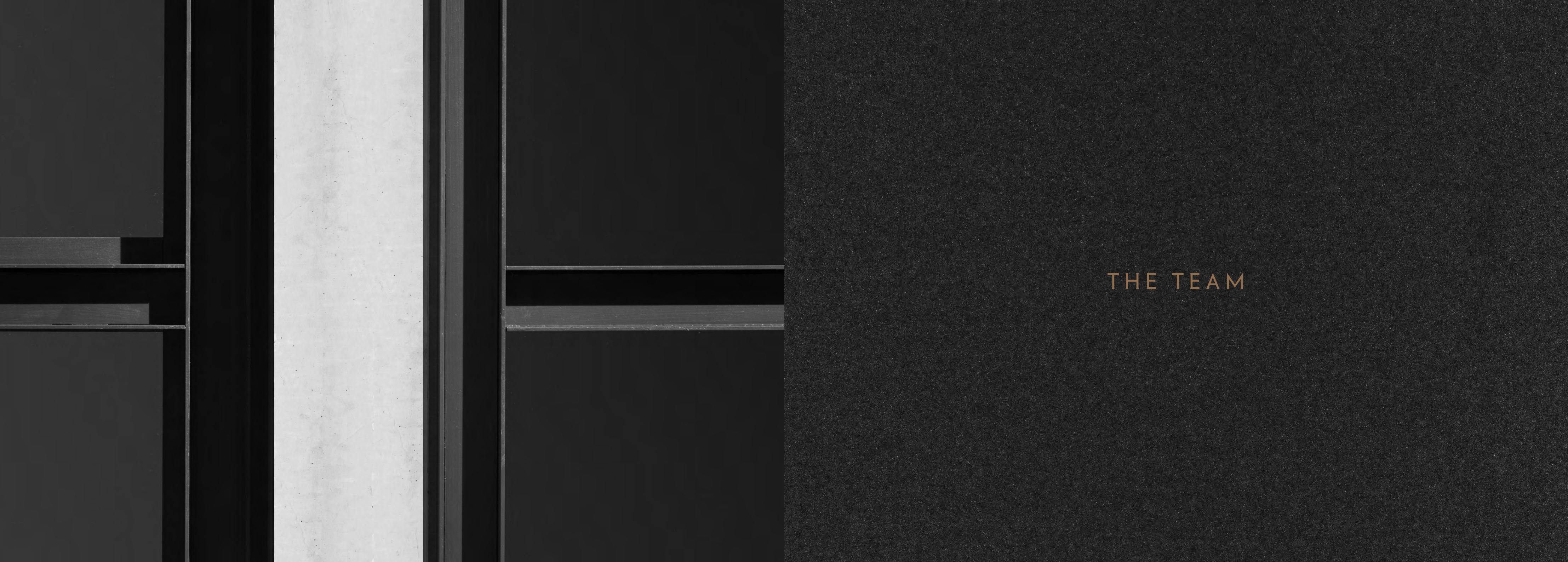
## Terraces

### Finishes

- Bronze finish bespoke metal balustrading
- Precast-concrete paving slabs

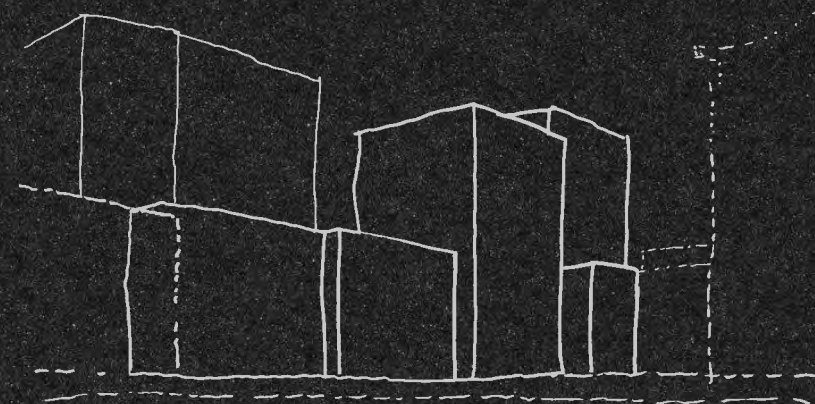
### Lighting

- Linear lighting at low level
- Wall mounted lighting along façade piers



THE TEAM

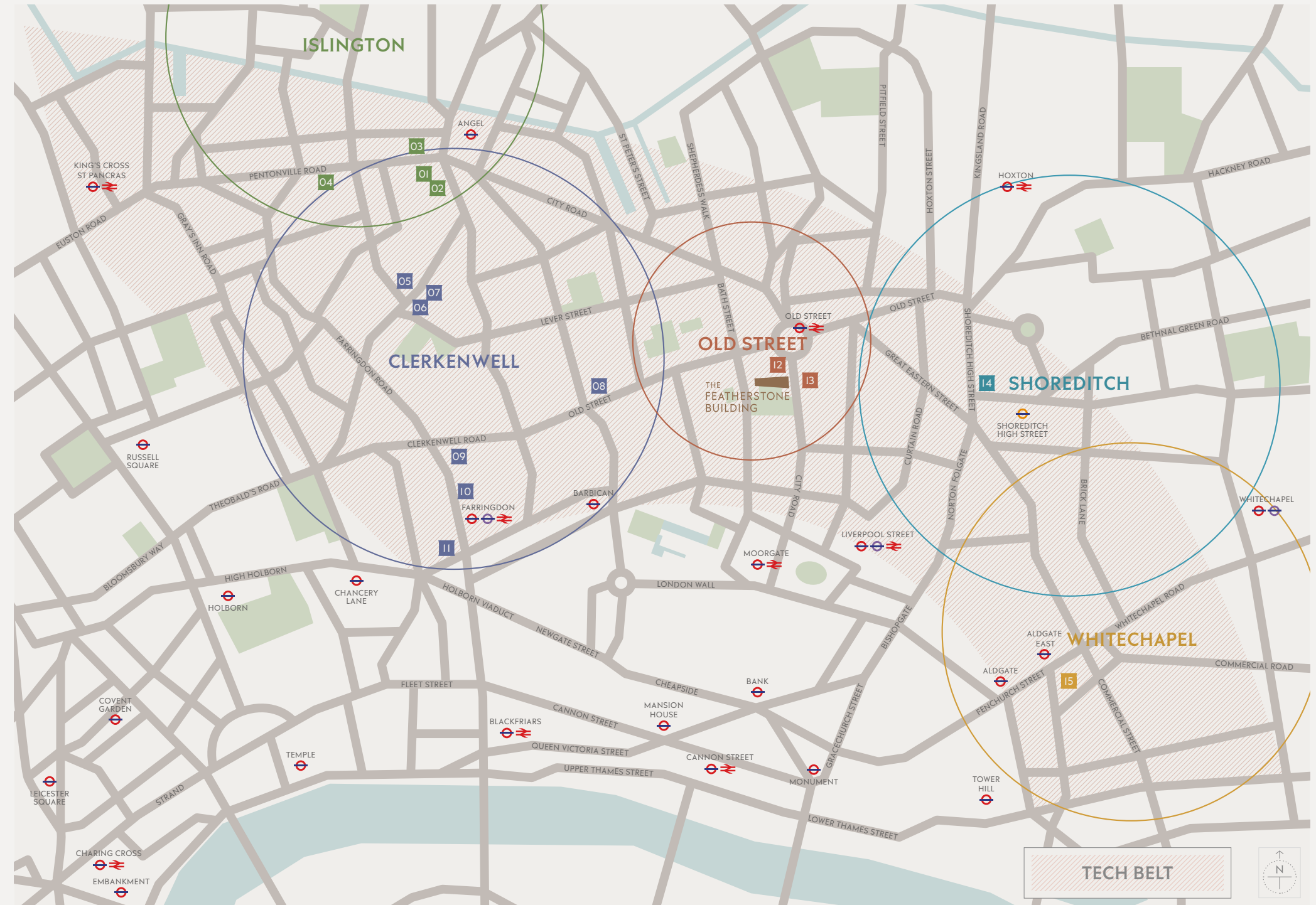
Derwent London is a different kind of developer – a design-led creative office specialist providing unique workplaces where occupiers become long-term partners. We look for prime sites with hidden potential where we can develop best-in-class buildings with generous volume and excellent natural light. Good transport links are vital. We are known for our flexible approach to ever-changing workspace requirements.



## Derwent London

A key part of our business model has been an industry-leading commitment to architecture, research and responsibility. We believe this approach helps us to deliver inherently sustainable spaces which are attractive to occupy and efficient to operate. We are committed to making better places and contribute to local communities.

- ISLINGTON
  - 01 Angel Building  
407 St John Street
  - 02 401 St John Street
  - 03 10-4 Pentonville Road
  - 04 Holford Works  
Cruikshank Street
- CLERKENWELL
  - 05 New River Yard:  
3-4 Hardwick Street  
5-8 Hardwick Street  
151 Rosebery Avenue  
161 Rosebery Avenue
  - 06 88 Rosebery Avenue
  - 07 90 Rosebery Avenue
  - 08 Morelands  
5-27 Old Street
  - 09 Turnmill  
63 Clerkenwell Road
  - 10 20 Farringdon Road
  - 11 19 Charterhouse Street
- OLD STREET
  - 12 White Collar Factory  
Old Street Yard
  - 13 1 Oliver's Yard
- SHOREDITCH
  - 14 Tea Building  
Shoreditch High Street
- WHITECHAPEL
  - 15 The White Chapel Building  
10 Whitechapel High Street





## Key holdings in Old Street and Shoreditch



### **WHITE COLLAR FACTORY**

Old Street ECI

Size 291,400 sq ft

Completion 2017

Architects AHMM

Tenants Adobe, AKT II, BGL, Box.com, Capital One, Egress, Spark44 and The Office Group

**Retail and leisure** Daffodil Mulligan and House of Fitness



### **TEA**

Shoreditch E1

Size 270,000 sq ft

Completion 2003

Architects AHMM

Tenants Albion, Buckley Gray Yeoman, Dentsu Aegis, Method, Monkey Kingdom, Mother Advertising and Wise

**Retail and leisure** Brat, Cowshed, Hales Gallery, Lyle's, Pizza East, Shoreditch House and Smoking Goat



### **morelands**

Clerkenwell ECI

Size 88,700 sq ft

Completion 2003

Architects AHMM

Tenants AHMM, Jackson Coles, Next Management and Stink Digital  
**Retail and leisure** Fare

## Derwent London: recent developments



### **BRUNEL • BUILDING**

Paddington W2

Size 243,000 sq ft

Completion 2019

Architects Fletcher Priest

Tenants Alpha FX, Coach, Hellman & Friedman, Dojo, Premier League, Sony Pictures Entertainment and Splunk



80  
CHARLOTTE  
STREET.

Fitzrovia W1

Size 380,000 sq ft

Completion 2020

Architects Make

Tenants Arup Group, Boston Consulting Group and Lee & Thompson



Soho Place

Soho W1

Size 285,000 sq ft

Completion 2022

Architects AHMM

Tenants Apollo Global Management and G-Research

# DL / MEMBERS

As a valued tenant of Derwent London, you will automatically enjoy complimentary DL/ Membership status.

DL/ Members have access to an ever-growing package of exclusive benefits.

Why? Because amenity and service are important to us. We see our role going beyond the responsibilities of a traditional landlord.



# DL / App

Your effortless personal portal to book meeting rooms in our DL/ Lounges, reserve your place at events and access exclusive discounts and offers.

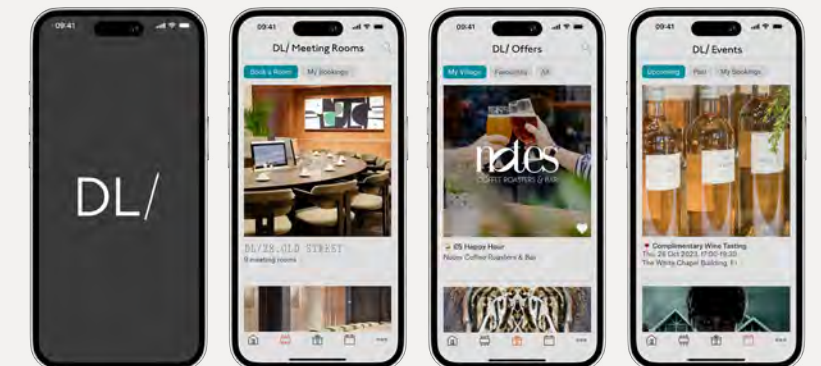
# DL / Experience

Provide an excellent front-of-house experience to Members in our buildings. From networking events, rooftop yoga, film screenings and charity activities to connect with local communities.

Left Rooftop yoga at Brunel Building W2



Above DL/78 Lounge



# DL / Lounges

Created for connection and collaboration, DL/78 and DL/28 are inspiring spaces where Members can work, meet, eat, socialise and be inspired. We designed these multi-purpose environments as destinations for our community to gather, learn and share meaningful and productive experiences together.



Members can drop in and work or network in these complimentary and private Lounges, each with their own on-site café. High-spec meeting rooms and private event spaces are available to book. Gather for creative workshops, wellness classes and inspiring talks. We collaborate with many well-known brands and businesses to curate a diverse programme of exclusive experience-led events, all hosted by the DL/ Lounges team. These spaces are yours to enjoy and are easy to access via the DL/ App.

Left DL/28 reception

Our DL/ Lounges include:

- Communal collaboration and working areas in the Lounge
- Bookable meeting rooms configured to your needs
- Library for quiet working (DL/28)
- Outdoor terrace (DL/28)
- Event / town hall space available for exclusive hire
- On-site café operated by Lantana at DL/78 and DL/ Service at DL/28
- Curated events programme
- All connected via the DL/ App



Above DL/28 drop-in working  
Right DL/28 Le Corbusier Room

**DL/28, 28 Featherstone Street, Old Street ECI  
(located within The Featherstone Building)**

**DL/78, 78 Charlotte Street, Fitzrovia W1**

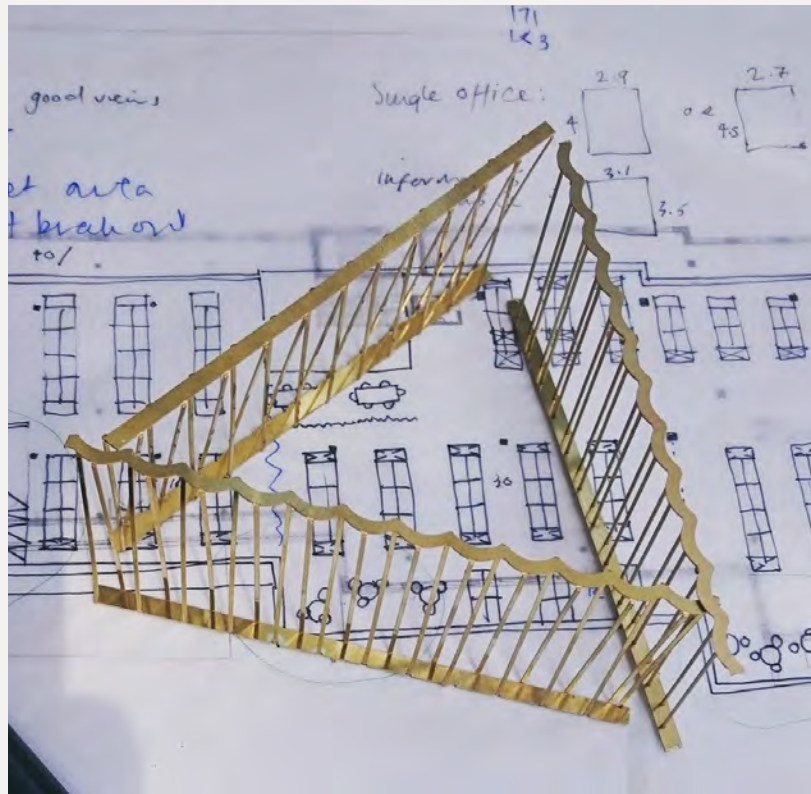


## Architects: Morris+Company

The company of architects, which in 2018 evolved out of longstanding Derwent collaborators Duggan Morris, draws inspiration from the robust, adaptable buildings of Victorian industrialists. Morris+Company's buildings pay homage to the past while adding new elements and layers to the story.

Meticulous researchers of local stories, styles and traditions, Morris+Company have the inquisitive nature of investigative journalists — allied to forensic skill of master crafts people. In the planning stages, a building's features and materials are refined over and over until the perfect form is found.

Below Testing the balustrades for The Featherstone Building



Above Testing the bay for The Featherstone Building  
Above right A collage of models and materials



## Agents

### Compton

Shaun Simons  
ss@compton.london  
07788 423 131

Michael Raibin  
mr@compton.london  
07880 795 679

Sarah Hill  
sh@compton.london  
07936 338 774

### Knight Frank

William Foster  
william.foster@knightfrank.com  
07748 985 951

Toby Pritchard-Davies  
toby.pritchard-davies@knightfrank.com  
07468 724 284

Tom Harvey  
tom.harvey@knightfrank.com  
07790 344 111

Francesca Skinner  
francesca.skinner@knightfrank.com  
07866 191 140

## Project Team

### Contractor

Skanska Construction UK

### Architect

Morris+Company

### Services Engineer

WSP

### Structural Engineer

Heyne Tillet Steel

### Project Manager

Blackburn & Co

### Quantity Surveyor

Exigere

### thefeatherstonebuilding.london

Whilst every effort has been made to ensure accuracy, no responsibility is taken for any error, omission or mis-statement in these particulars, which do not constitute an offer or contract. No representation or warranty whatever is made or given either during negotiations or in particular by the vendor, lessors or agents Messrs Compton and Knight Frank. All figures are exclusive of rates, service charge, VAT and all other outgoings. The agents have not tested the services. All floor areas are approximate.

Date of preparation January 2024



DERWENT  
LONDON

     derwentlondon