



FURNISHED \* FLEXIBLE

# THE WHITE CHAPEL BUILDING

3,174 sq ft of high-quality  
Furnished + Flexible office space is  
available now on the third floor

A further 5,557 sq ft of premium  
Furnished + Flexible workspace will  
be available on the fourth floor  
from July 2026

WHITECHAPEL  
HIGH STREET E1

# DERWENT LONDON, YOUR LANDLORD



25 Savile Row W1

We are London's leading specialist in crafting design-led, sustainable workplaces that inspire, enhance wellbeing, and support business aspirations.

- A proven track record and expertise
- Largest central London office-focused REIT
- £5.1bn investment portfolio
- 5.3m sq ft in central London

We are a different kind of investor, developer and commercial landlord. Our strategic and considered approach focuses on the following areas, setting us apart from others:

- Innovative and inspiring architecture and design
- A personal and relationship-driven ethos
- A unique approach to service and amenity, which authentically considers the needs of the business and the individuals within our buildings
- Complimentary DL/Member benefits package for every office occupier with tangible benefits and enhanced experience for your Talent
- A commitment to sustainability in everything we do

## Vision

We craft inspiring and distinctive space where people thrive.

## Purpose

We design and curate long-life, low carbon, intelligent offices that contribute to London's position as a leading global city.

## Values

We build long-term relationships. We lead by design. We act with integrity.



Discover more about Derwent London and our story so far

# DL/MEMBERS BY DERWENT LONDON



DL/28 in Old Street EC1



DL/78 in Fitzrovia W1



Derwent London Membership is a complimentary benefits package available to every occupier and their employees working in a Derwent London building. Membership status is automatic and as DL/Members, all employees can enjoy access to:

- Communal collaboration and working areas
- Bookable meeting rooms configured to your needs
- Phone booths and library for quiet working (DL/28)
- Event / town hall space available for exclusive hire
- DL/Service café serving delicious food and drink
- All connected via the DL/App

## DL/Service

Preferential Member rates on high-quality, seasonal, food and drink at the five DL/Service cafés within our buildings and Lounges.

## DL/App

An ever-growing package of exclusive benefits on the DL/ App, including specially negotiated discounts from a diverse collection of businesses, local coffee shops, restaurants and wellness brands.

## Member Events

A packed calendar of exciting events curated by our dedicated DL/Member Experience team.



Discover what it means  
to be a DL/Member

DL/MEMBERS  
by DERWENT LONDON

# INTRODUCTION

Dominating the corner of Whitechapel High Street and Mansell Street, The White Chapel Building is an 8-storey landmark with a striking 7,000 sq ft full-height atrium at its core. The reception is home to breakout areas, workstations and DL/Service café and provides direct access to a private landscaped terrace adjacent to Braham Park.



## Schedule of Areas

Fourth floor	5,557 sq ft*	516 sq m*	Available July 2026
Third floor	3,174 sq ft	295 sq m	Available now
<b>Total</b>	<b>8,731 sq ft*</b>	<b>811 sq m*</b>	

\*Subject to measurement on Practical Completion.  
IPMS measurement on request.



FURNISHED \* FLEXIBLE \*

# KEY FEATURES

- 3,174 sq ft of Furnished + Flexible space available now on the part third floor
- 5,557 sq ft of Furnished + Flexible space available will be available on the part fourth floor from July 2026
- Ground-floor reception and lobby featuring communal workstations, and lounge seating
- Dramatic 8-storey central atrium
- DL/Service café providing a dedicated service to tenants and visitors
- Private outdoor terrace with café seating and access to Braham Park green space
- Secure cycle storage area with 187 bike racks and 20 showers
- Active and passive 2-pipe chilled beams throughout the office floors
- WiredScore Certified Platinum
- Ideally located moments from Aldgate and Aldgate East stations, providing fast access to Liverpool Street station for National Rail and Elizabeth Line connections
- Complimentary access to Derwent London's Members Lounges, DL/28 in Old Street EC1 and DL/78 in Fitzrovia W1



# THIRD FLOOR

3,174 sq ft / 295 sq m

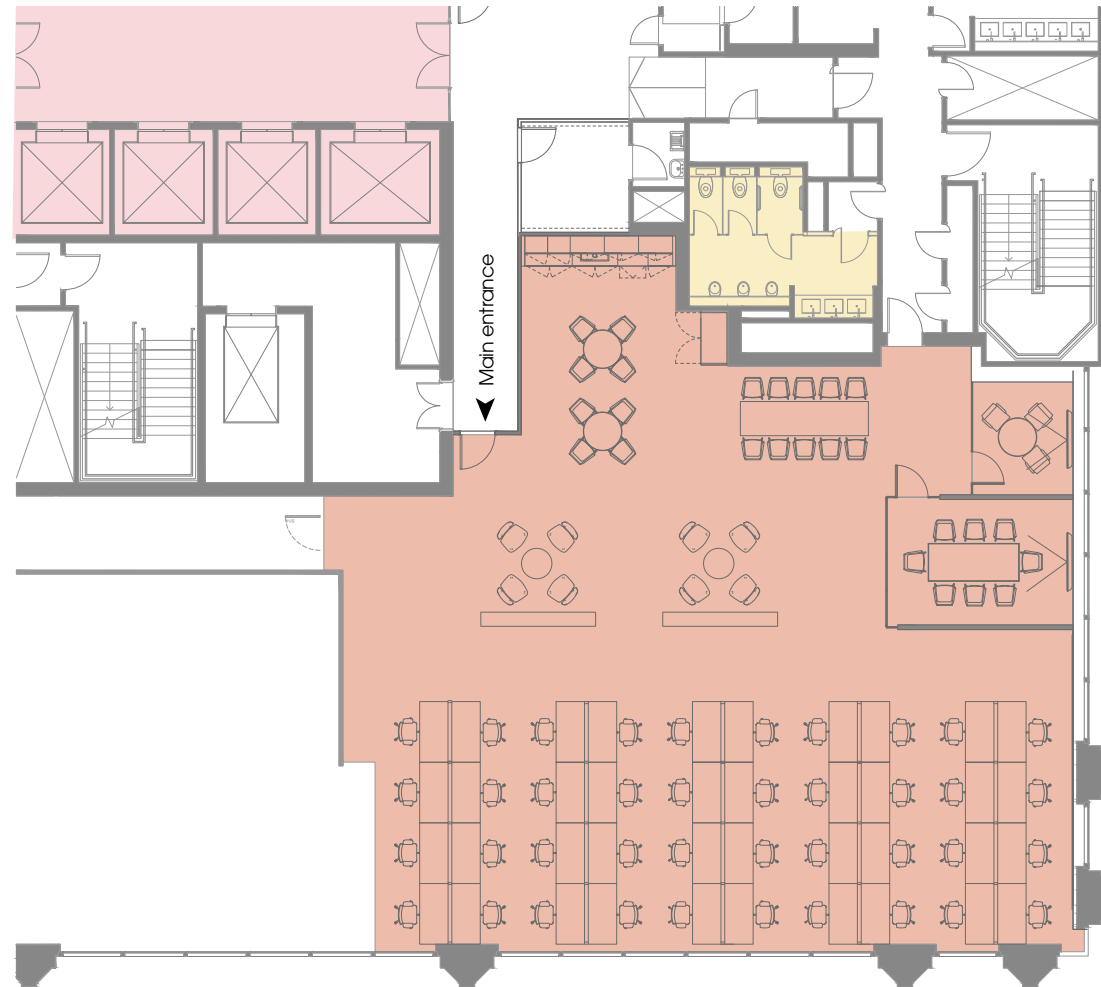
## What's Included:

-  40 x desks
-  1 x 3-person meeting room
-  1 x 8-person meeting room
-  Kitchenette
-  Breakout spaces
-  Hot desks
-  Air conditioning
-  Storage space and comms room
-  Fully cabled with high-speed fibre internet

## Your simple contract:




- All-in rent inclusive of rent, service charge, business rates, building insurance
- Flexible lease terms
- Simple short form contract

FURNISHED \* FLEXIBLE \*



Braham Street

## Key:

-  Demise
-  Lift Lobby
-  WCs





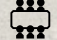

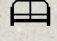




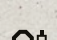
# THIRD FLOOR



# FOURTH FLOOR

5,557 sq ft / 516 sq m  
(Available July 2026)

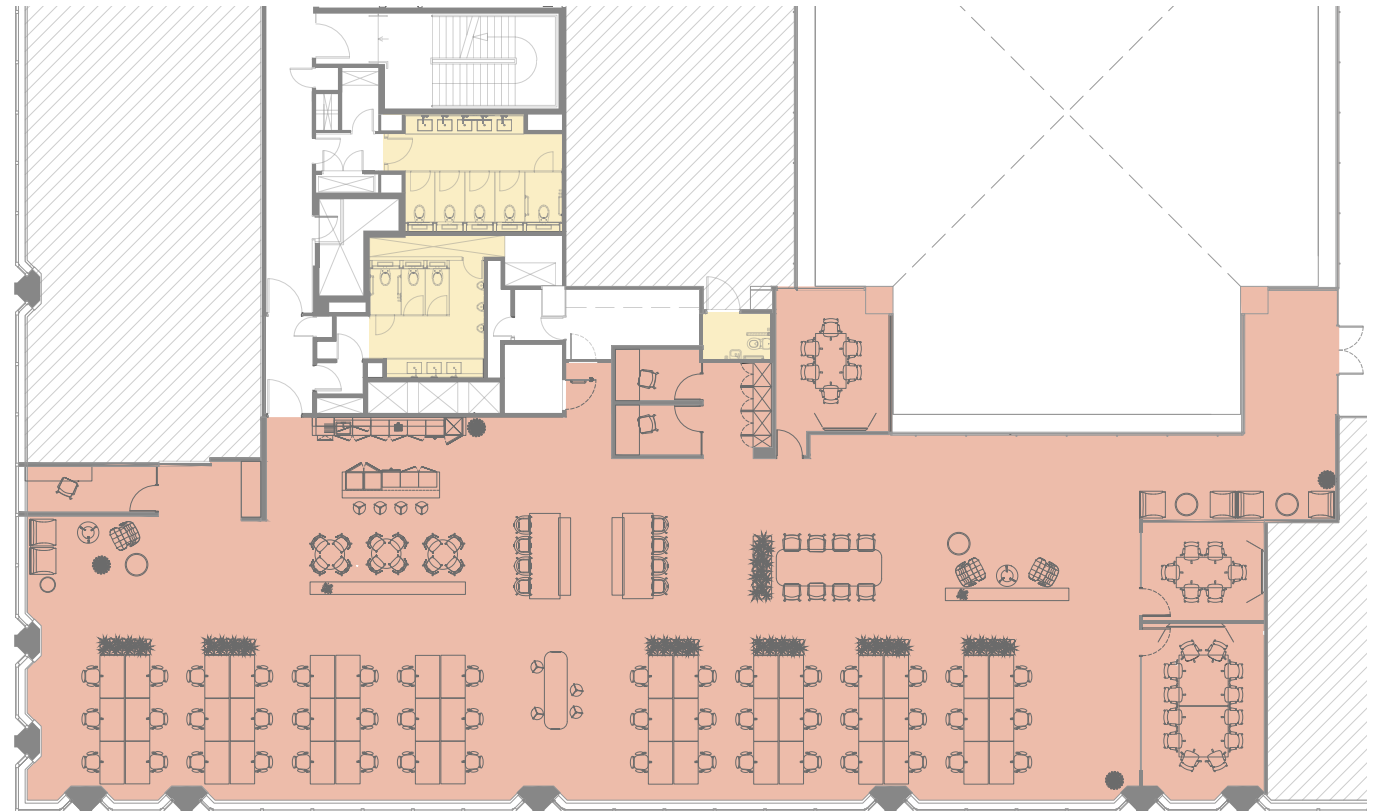
## What's Included:

-  48 x desks
-  2 x 6-person meeting room
-  1 x 12-person meeting room
-  Kitchenette
-  Breakout spaces
-  Phone booths
-  Hot desks
-  Air conditioning
-  Storage space and comms room
-  Fully cabled with high-speed fibre internet

## Your simple contract:

- All-in rent inclusive of rent, service charge, business rates, building insurance
- Flexible lease terms
- Simple short form contract

FURNISHED \* FLEXIBLE \*



Braham Street

## Key:

-  Demise
-  WCs



# ON YOUR DOORSTEP

## Within a 5-minute walk

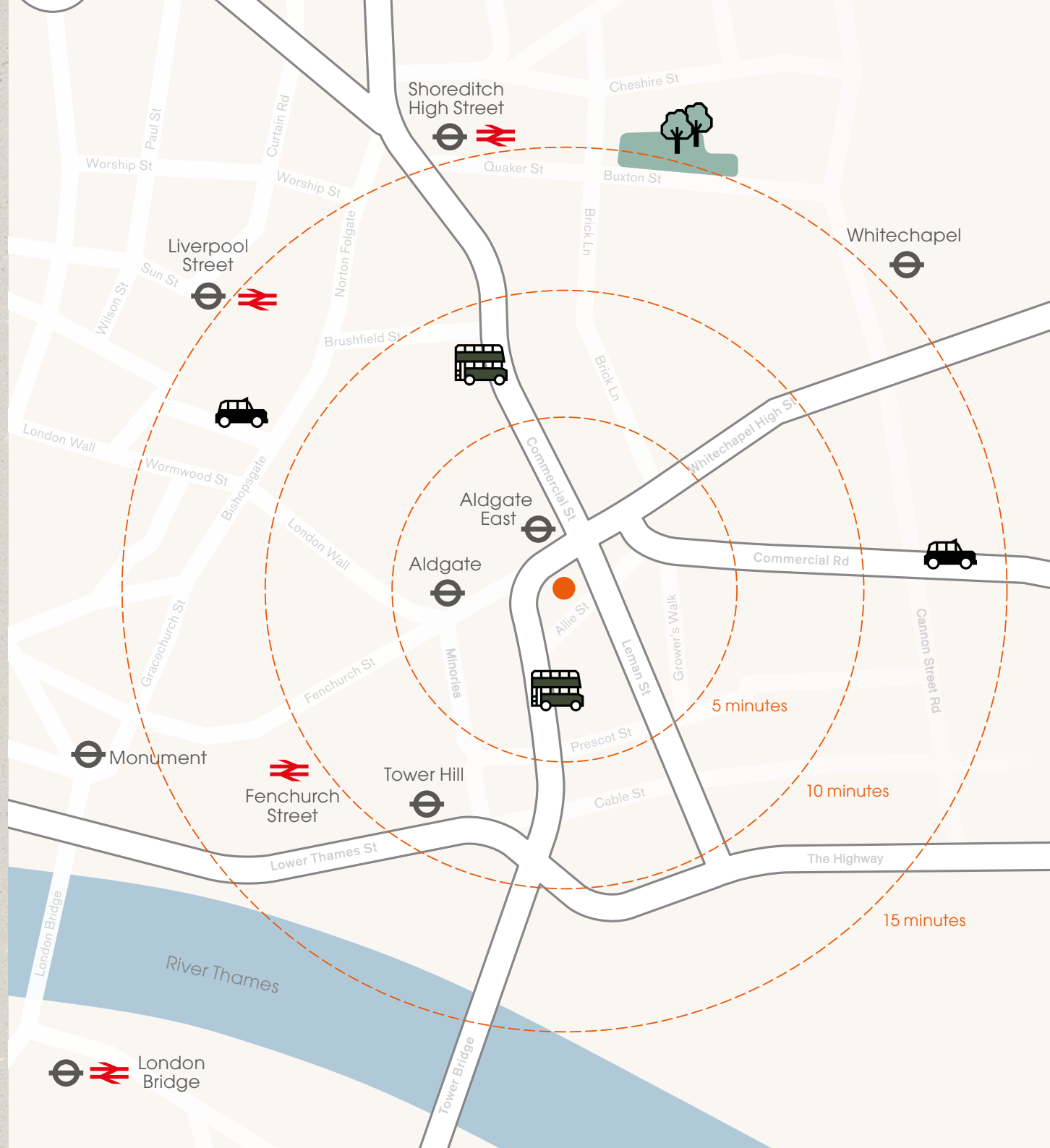
- Anytime Fitness
- Artsadmin, Toynbee Studios
- Bar + Block Steakhouse
- City Bouldering
- DL/ Service
- Double Tree Hilton
- The Jewry
- Jin Bow Law
- The Running Horse
- White Swan
- Yuu Kitchen

## Within a 10-minute walk

- Aim Escape
- The Alchemist
- Bife
- Chew Fun
- The Corner Hotel
- The Culpeper
- Curzon Cinema
- Dulce Coffee
- Emilia's Crafted Pasta
- Grange Tower Bridge
- Hungry Donkey
- Greek Kitchen
- Leman Locke
- Leman Street Tavern
- Motel One
- Spitalfields Market
- The Oliver Conquest
- The Pastry Parlour
- The Running Horse
- Whitechapel Gallery

## Fastest direct journey from The White Chapel Building to the nearest transport connections:

Aldgate East	 	1-minute walk
Aldgate	 	3-minute walk
Tower Hill	  	8-minute walk
Liverpool Street	     	10 minutes via Aldgate East



  London Bridge

## BNP Paribas Real Estate

### James Strevens

james.strevens@realestate.bnpparibas  
07824 414 682

### Alastair Robinson

alastair.robinson@realestate.bnpparibas  
07939 939 824

## Compton

### Elliott Stern

es@compton.london  
07834 918 700

### Josh Perlmutter

jp@compton.london  
07814 699 096

## Cushman & Wakefield

### Eleanor Reed

eleanor.reed@cushwake.com  
07860 267 086

### Holly Hamer

holly.hamer@cushwake.com  
07471 725 112

### Misrepresentation Act

Whilst every effort has been made to ensure accuracy, no responsibility is taken for any error, omission or misstatement in these particulars which do not constitute an offer or contract. No representation or warranty whatever is made or given either during negotiations or in particular by the vendor, lessors or agents BNP Paribas Real Estate, Compton and Cushman & Wakefield. All figures are exclusive of rates, service charge, VAT and all other outgoings.

The agents have not tested the services. Where stated floor areas are approximate. Date of preparation May 2026.

DERWENT  
LONDON

